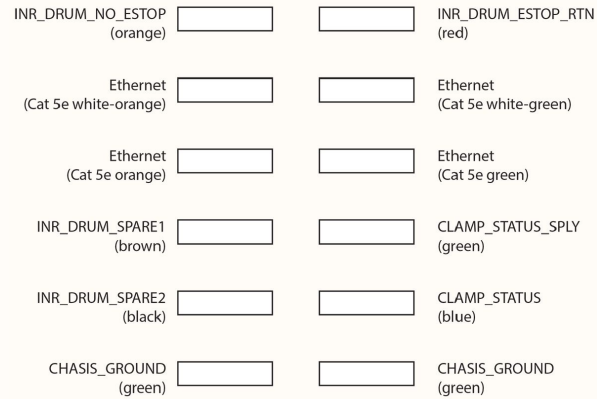


K1DM3 Outer Drum "Signal" Wiper Block View facing block from the outside of outer drum

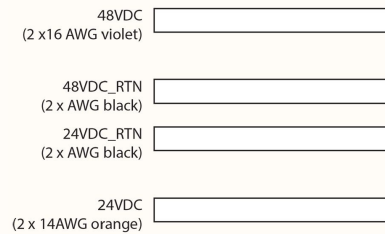
M2 ↑



M1 ↓

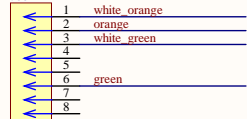
K1DM3 Outer Drum "Power" Wiper Block View facing block from the outside of outer drum

M2 ↑



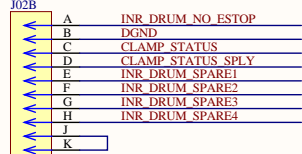
M1 ↓

K1DM3_PANEL-INR_DRUM_ETHER
J08B



RJF21NSCC

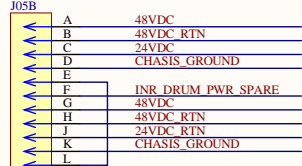
K1DM3_PANEL-INR_DRUM_SIGNAL
J02B



PT02E12-10P(SR)

NOTE: INR_DRUM_SPARE3 & INR_DRUM_SPARE4 END AT OUTER DRUM. THEY ARE NOT CARRIED OVER CONTACTS TO INNER DRUM.

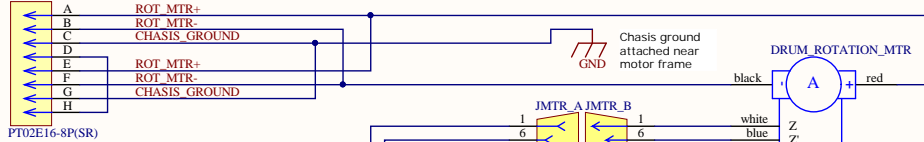
K1DM3_PANEL-INR_DRUM_POWER
J05B



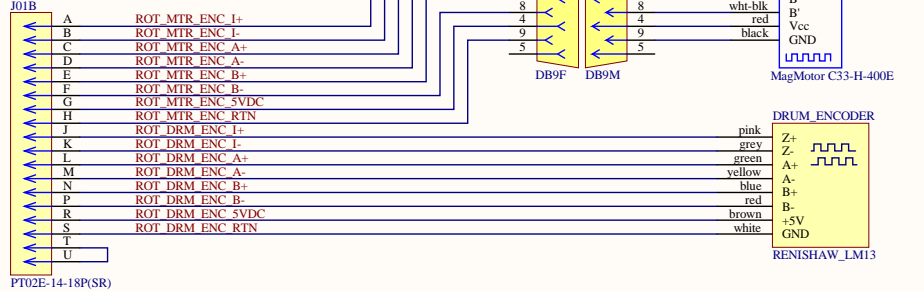
PT02E18-11P(SR)

| | | | |
|--|--|---------------------|---|
| | <i>LICK OBSERVATORIES</i> | K1DM3 | KECK 1 DEPLOYABLE TERTIARY MIRROR |
| | DRAWN: SANDFORD ENGR: SANDFORD | | LE0300 Outer Drum |
| | 872-LE0300-OuterDrum_r00.PjtPcb 872-LE0300-1-OuterDrum_InnerDrum_SchDoc | | Outer Drum - Inner drum connection |
| | | 872-LE0300-1 | REV 00 B 1/3 |

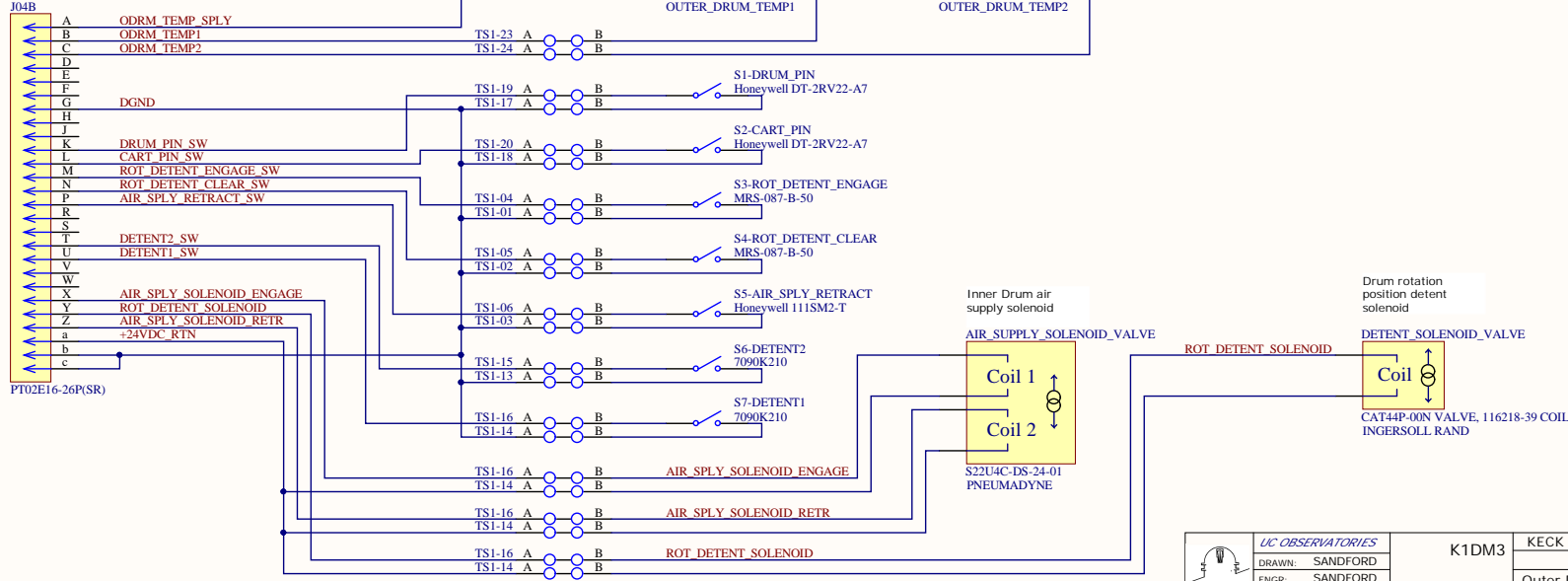
K1DM3_PANEL-ROT_MOTOR
J06B



K1DM3_PANEL-ROT_ENCODERS
J01B



K1DM3_PANEL-ODRM_SIGNAL
J04B



| | | | |
|--|---|-------|---|
| | UC OBSERVATORIES | K1DM3 | KECK 1 DEPLOYABLE TERTIARY MIRROR |
| | DRAWN: SANDFORD | | LE0300 Outer Drum |
| | ENGR: SANDFORD | | Outer Drum - Encoders, Motors, Switches |
| | 872-LE0300-OuterDrum_r00.PjtPub | | 872-LE0300-2 |
| | 872-LE0300-2-OuterDrum_EncMtrSig_SchDoc | | REV 00 |

KIDM3_PANEL-DEFINING_POINTS

J21B

- A
- B
- C
- D
- E
- F
- G
- H
- J
- K
- L
- M
- N
- P
- R

PT00SE14-15P

BALL LOCK NEUT
 BALL LOCK LINE
 BALL_UNLOCK_NEUT
 BALL_UNLOCK_LINE
 GROOVE LOCK NEUT
 GROOVE LOCK LINE
 GROOVE_UNLOCK_NEUT
 GROOVE_UNLOCK_LINE
 FLAT LOCK NEUT
 FLAT LOCK LINE
 FLAT_UNLOCK_NEUT
 FLAT_UNLOCK_LINE

BALL_LOCK



IR 116-218-33

BALL_UNLOCK



IR 116-218-33

GROOVE_LOCK



IR 116-218-33

GROOVE_UNLOCK



IR 116-218-33

FLAT_LOCK



IR 116-218-33

FLAT_UNLOCK



IR 116-218-33

| | | | |
|---------------------------------|---|-------------------------------------|-----------------------------------|
| | UC OBSERVATORIES | K1DM3 | KECK 1 DEPLOYABLE TERTIARY MIRROR |
| | DRAWN: SANDFORD | | LE0300 Outer Drum |
| | ENGR: SANDFORD | Outer Drum - defining pt. solenoids | |
| 872-LE0300-OuterDrum_r00.PjlPdb | 872-LE0300-3-OuterDrum_DefinePts_SchDoc | 872-LE0300-3 | REV 00 B 3/3 |