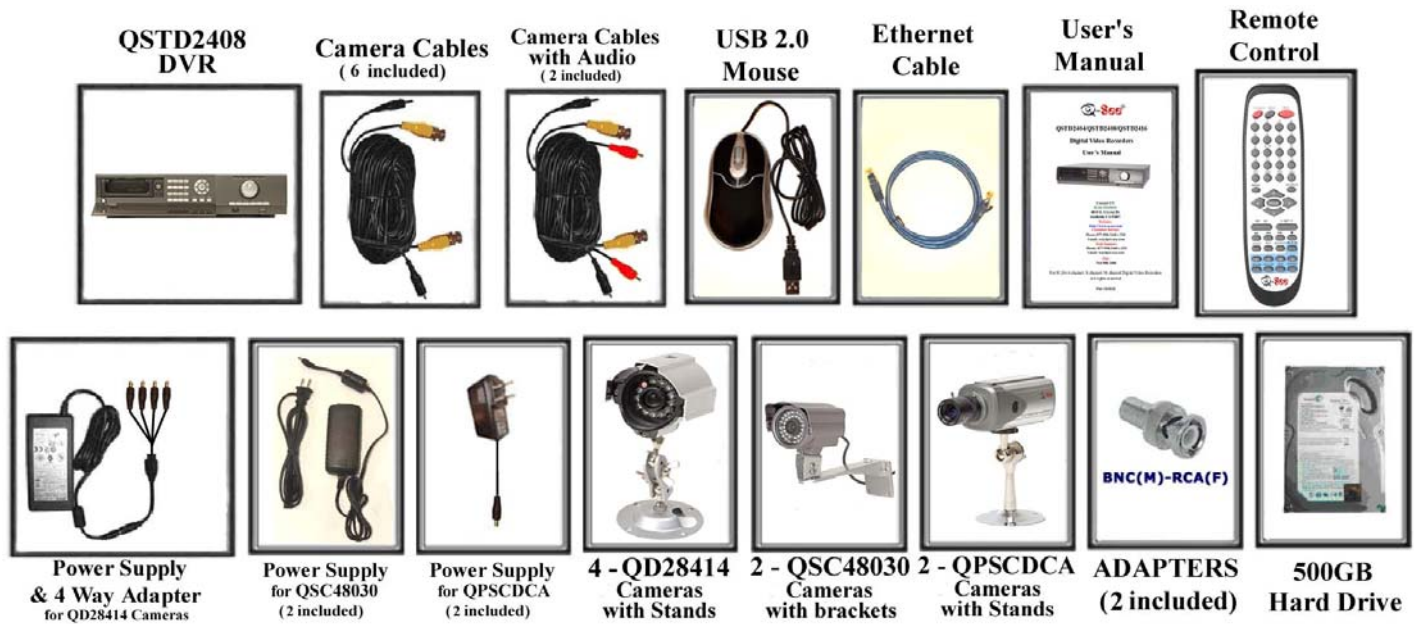
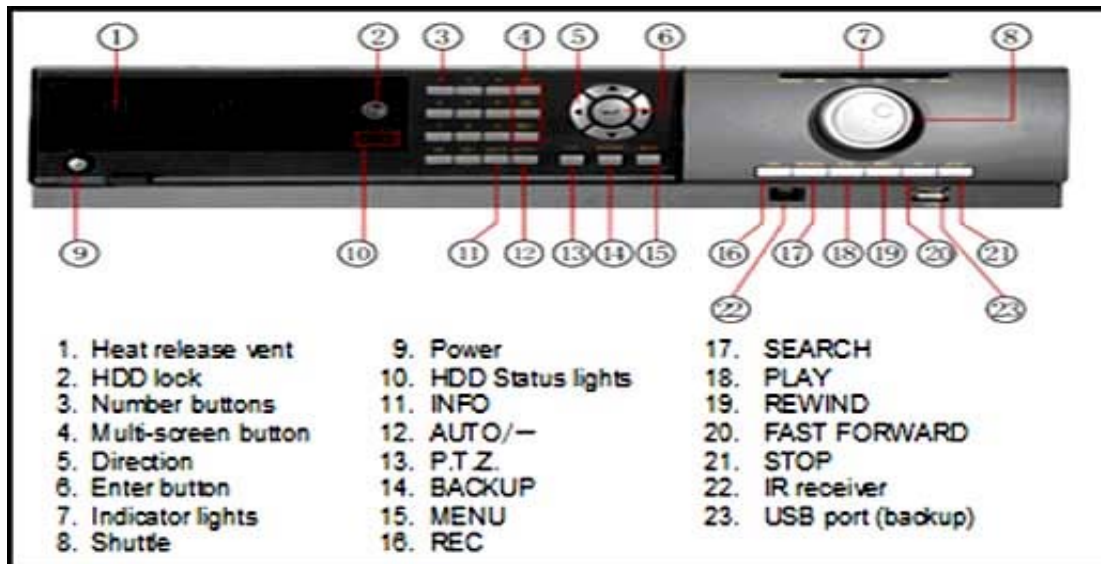


QUICK INSTALLATION GUIDE FOR H264 DVR 8 CH MODEL QSTD5088C-500

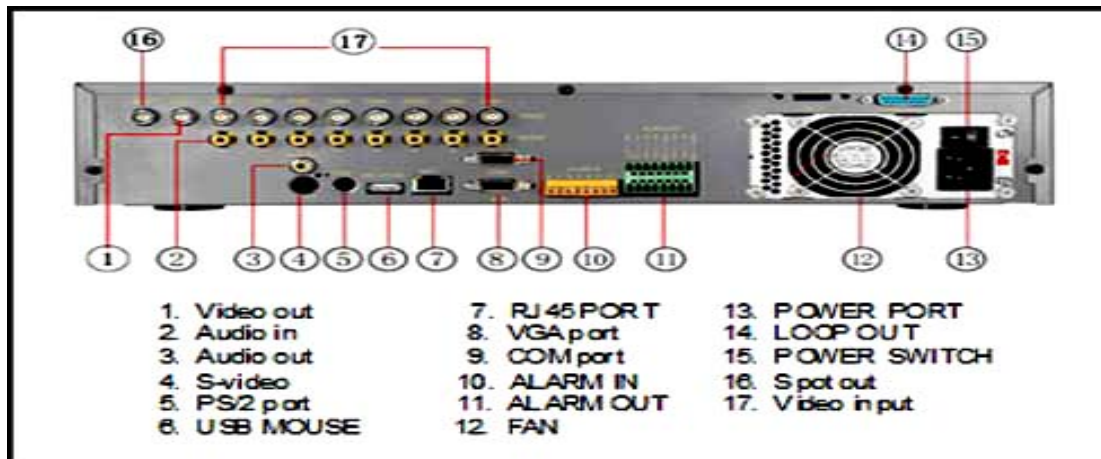
Part 1- Package contents:



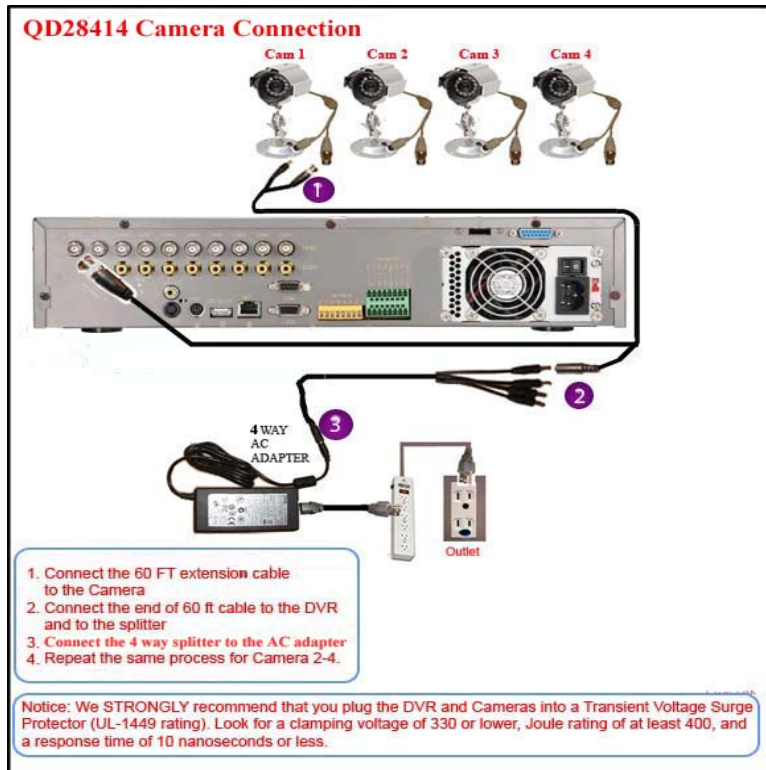
Part 2 – Front Panel Layout



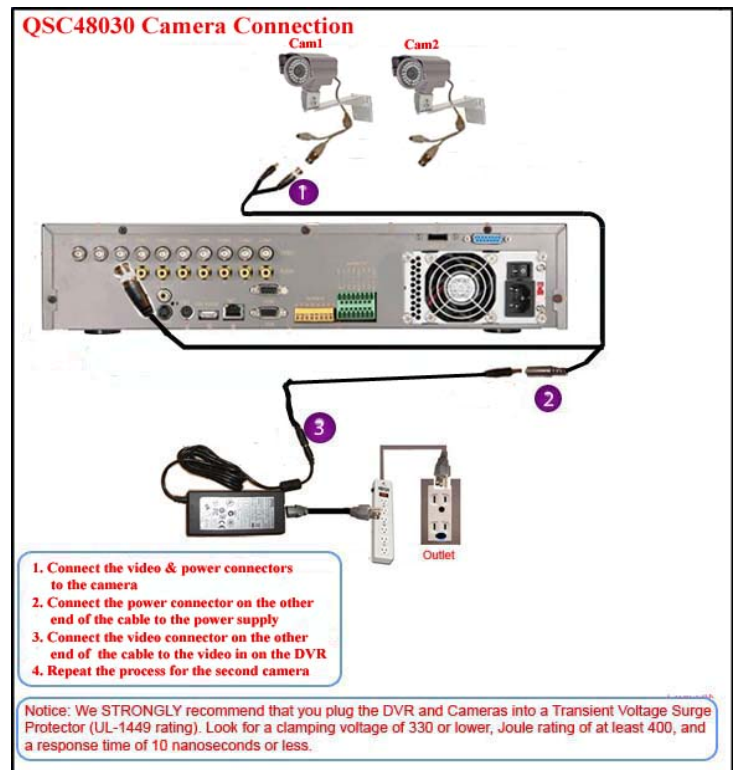
Part 3 – Rear Panel Layout



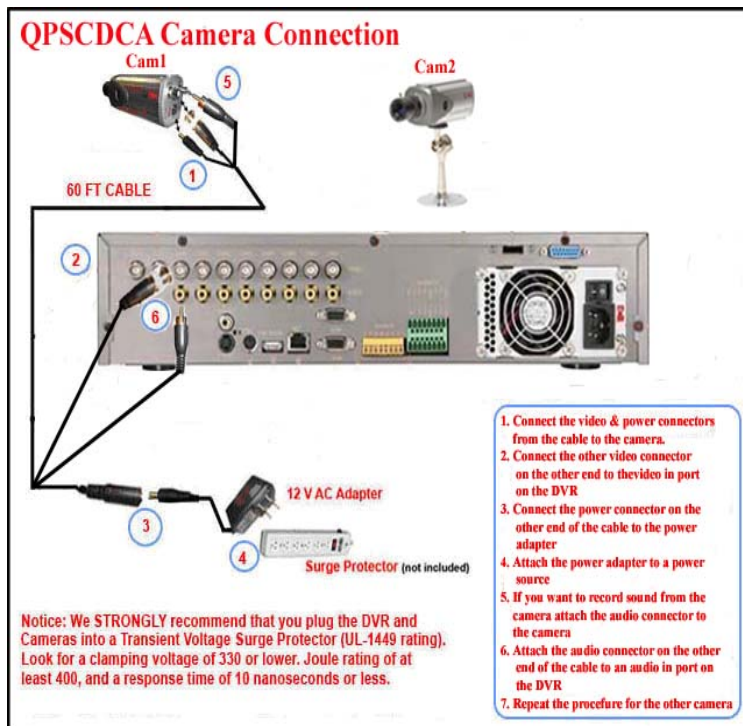
Part 4A – Connecting the QD28414 Cameras



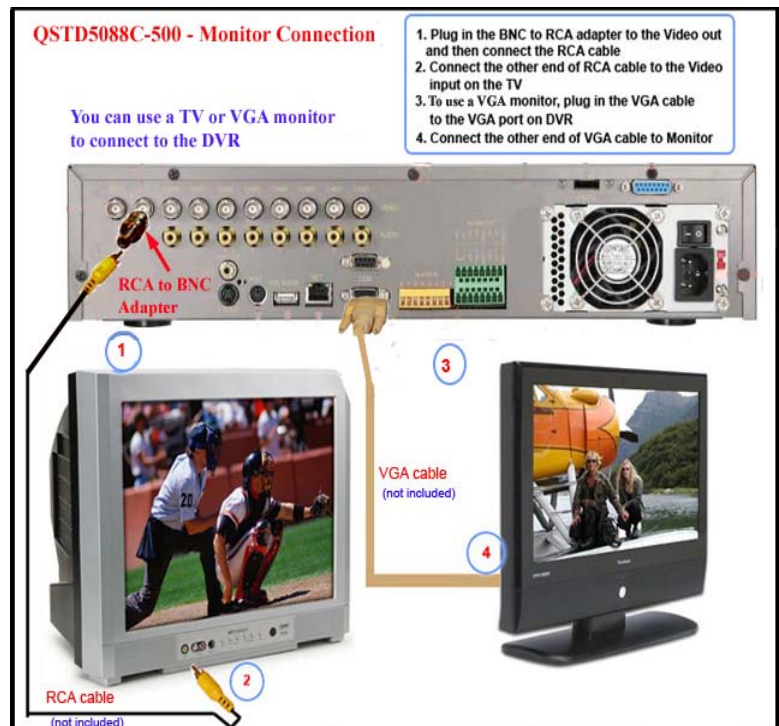
Part 4B – Connecting the QSC48030 Cameras



Part 4C – Connecting the QPSCDCA Cameras



Part 5 – Connecting to Monitor

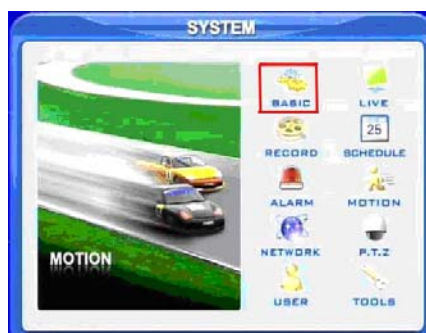


Part 5 – Accessing the DVR menus

Press the MENU key which will bring up the LOGIN screen shown as Pic 5.1 and enter the user name and password which is admin and 123456 by default. This will bring up the SYSTEM screen in Pic 5.2. Use the Direction Keys (number 5 on the Front Panel diagram in Part 2) to move the cursor and ENTER key (number 6) to select. Select the BASIC option (RED square in Pic 5.2) and it will display the screen in Pic 5.3 where you set time and date and enable audio and password check. On the SYSTEM screen you use the LIVE option to adjust the camera images, the RECORD option (Pic 6.2) to set up resolution, frame rate, video quality and enable cameras for recording, the PTZ option to set up Pan-Tilt-Zoom cameras, the USER option to set up users on the system, the NETWORK option to setup the unit for remote access, and the TOOLS option to access hard drive information, update firmware, and restore system defaults. Refer to Chapter 3 of the user's manual for more information on the SYSTEM menu.



Pic 5.1



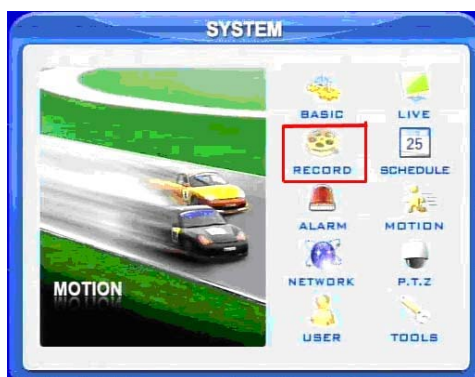
Pic 5.2



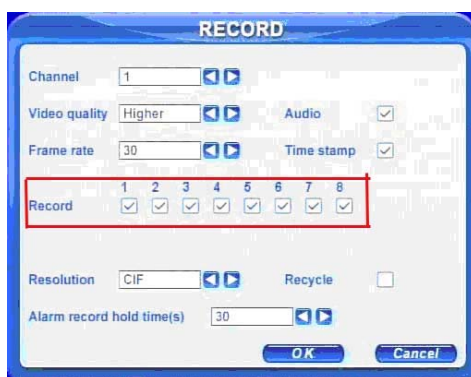
Pic 5.3

Part 6 – Setting up DVR to record

There are 4 modes for recording: manual, schedule, motion detection, and external sensor. In this Quick Start Guide we will cover manual, schedule, and motion detection. If you want to use external sensor alarms refer to sections 2.3.2 and 3.3.5 of the user's manual for information on how to set these up. To setup any type of recording you need to select RECORD in the SYSTEM menu (RED square in Pic 6.1) which will bring up the RECORD screen (Pic 6.2). Here you can enable recording on the channels you want to record (RED box in Pic 6.2) and select the quality, frame rate, and resolution for each camera.



Pic 6.1



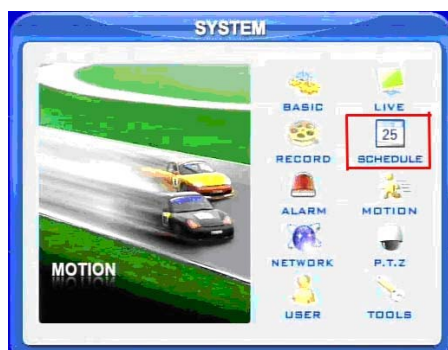
Pic 6.2

1. Manual Recording:

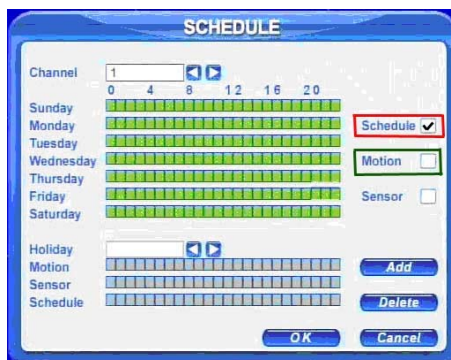
Once you have setup and enabled the cameras you want to record, push the RECORD key (number 16 on Front Panel in Part 2). It will start recording and will continue recording until you push the STOP key (number 21 on the Front Panel in Part 2). If the system is password protected it will ask for a password to stop recording.

2. Time Schedule Recording.

Follow instructions in Part 5 to go to SYSTEM menu. Use the Direction Keys (number 5 on Front Panel in Part 2) to select SCHEDULE (RED box in Pic 6.3) and hit ENTER (number 6 on Front Panel in Part 2). This will display the screen in Pic 6.4. Use the Direction Keys to go to the SCHEDULE option (RED square in Pic 6.4) and use the ENTER key to put a checkmark in the box. Then use the Direction Keys and ENTER key to select or de-select the hours of each day you want to have the cameras record. Green means the hour is enabled and transparent means it is not enabled. Select OK to save the settings. Repeat this procedure for the other cameras.



Pic 6.3



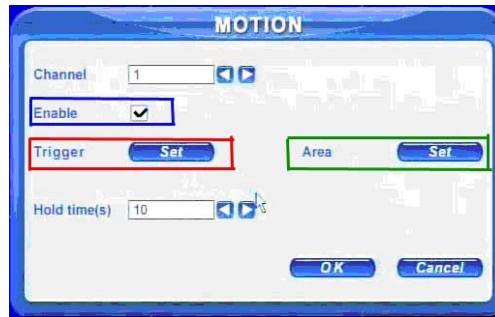
Pic 6.4

3. Motion Detection Recording:

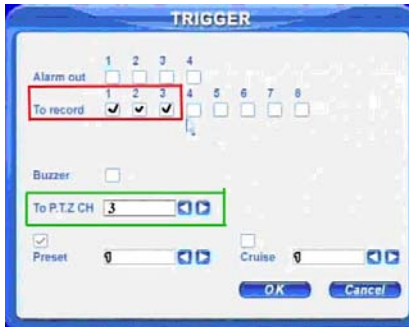
Follow instructions in **2. Time Schedule Recording** to go to the SCHEDULE options setup the times for each day that you want to record on motion detection. Use the Direction Keys (number 5 on Front Panel in Part 2) to go to the Motion option (GREEN box in Pic 6.4) and use the ENTER key (number 6 on Front Panel in Part 2) to put a check mark in this box instead of the Schedule option box.



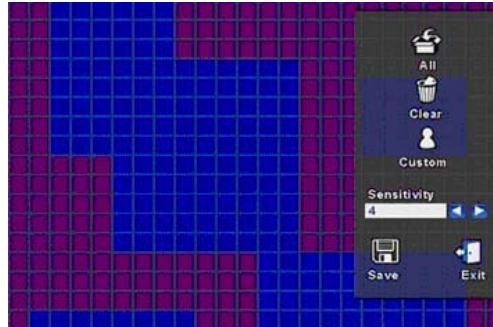
Pic 6.5



Pic 6.6



Pic 6.7



Pic 6.8

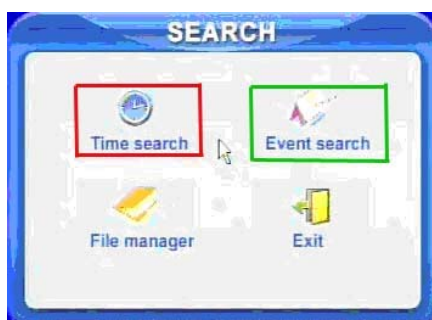
Next go to the SYSTEM option and use the Direction Keys to select the MOTION option (GREEN square in Pic 6.5) and hit the ENTER key to open the MOTION options (Pic 6.6). Use the ENTER key to put a checkmark in the Enable option (BLUE box) and then select the SET button in the Trigger options which brings up the option box in Pic 6.4. Here you can select the camera, and any other cameras you want to record when motion is detected on this camera. You also have the option for any PTZ cameras on the system to scan and record. In Pic 6.7 cameras 1, 2, and 3 are set to record if motion is detected on camera 1, which includes the PTZ camera which is on channel 3. Select OK to save the settings and then select the Area Set option (GREEN box in Pic 6.6) which will display the screen in Pic 6.8. Use the Direction keys and ENTER key to select the areas of the camera screen that you want to be sensitive to motion. Blue means the area is sensitive to motion and Red means the area is not sensitive to motion and will not trigger recording if motion happens in this area. You can also select option in the upper right hand corner to make the entire screen motion sensitive. Next select how sensitive you want the area to be by selecting a number in the Sensitivity box, 1 is the least sensitive and 8 is the most sensitive. Select the Save option to save the settings. Repeat the procedure for the other cameras.

Part 7 – Setting up DVR to Playback Files

Press the SEARCH key on the DVR (number 17 on the Front Panel in Part 2), if the system is password protected it will ask you to enter a user name and password. This will bring up the SEARCH options shown as Pic 7.1. Use the Direction Keys (number 5 on Front Panel in Part 2) to select Time search (RED box in Pic 7.1) and hit the ENTER key (number 6 on Front Panel in Part 2). This will display the TIME calendar shown as Pic 7.2. If there are files on a day the day will be highlighted. Use the Direction Keys to select the date you want, hit the ENTER key to display the Time Search menu shown as Pic 7.3. Select the channels you want to search and the display mode you want and select the play option. This will display the file player shown in Pic 7.5.

TO SEARCH BY EVENT: Press the SEARCH key on the DVR (number 17 on the Front Panel in Part 2), if the system is password protected it will ask you to enter a user name and password. This will bring up the SEARCH options shown as Pic 7.1. Use the Direction Keys (number 5 on Front Panel in Part 2) to select Event search (GREEN box in Pic 7.1) and hit the ENTER key (number 6 on Front Panel in Part 2). Use the Date icon to select the date you want and the available files will be displayed in the box on the bottom of the screen. Select a file and push ENTER and the File Player in Pic 7.5 will open and play the selected recording.

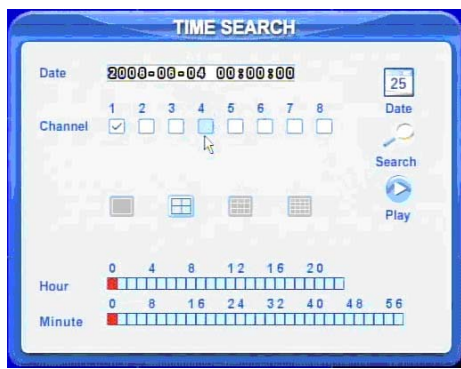
NOTE: Recording will not be interrupted while you are in Playback mode.



Pic 7.1



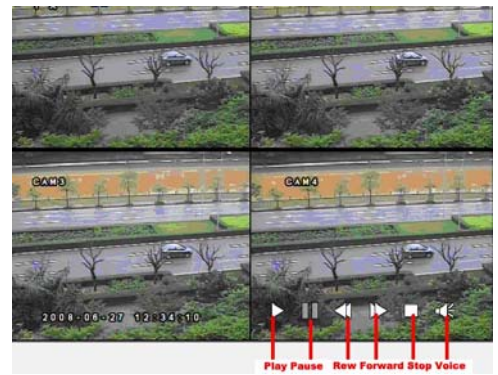
Pic 7.2



Pic 7.3



Pic 7.4

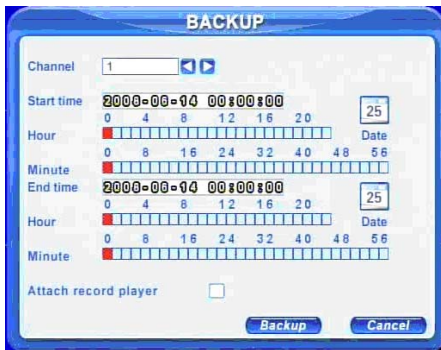


Pic 7.5

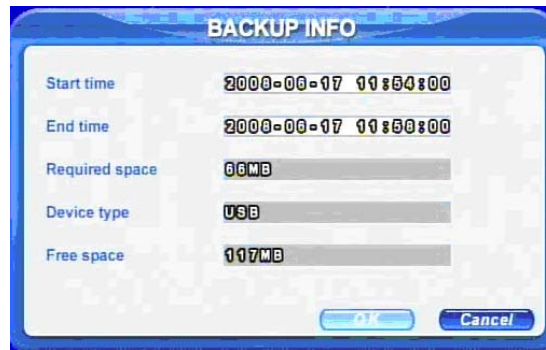
Part 8 – Setting up the DVR to Backup Files

Insert a USB flash drive into the USB port on the front of the DVR. Press the BACKUP button on the DVR (number 14 on the Front Panel in Part 2), if the system is password protected it will ask you to enter a user name and password. This will bring up the BACKUP screen shown as Pic 8.1. Use the Direction Keys (number 5 on Front Panel in Part 2) to select the Date icon and hit the ENTER key (number 6 on Front Panel in Part 2). Select the date of the files you want to backup. The days with files will be highlighted. Then use the Direction Keys to select the Start time and End time, and put a checkmark in the Attach record player box if you want to include a copy of the record player with the backup, and then select the Backup key. This will display the BACKUP INFO screen shown as Pic 8.2 which will show the start and end time, the space required for the backup, the device you are backing up to, and how much space is available on the device. Select OK and the backup will start and a progress bar will be displayed, shown as Pic 8.3. Once the backup is completed a dialog box will display telling you it has been completed.

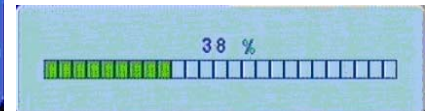
NOTE: If you stop recording while backing up the files, the backup will go faster.



Pic 8.1



Pic 8.2



Pic 8.3

If you have questions:

Contact Us:

Mailing Address:

DPS Inc.

8015 E. Crystal Dr
Anaheim, CA 92807

Website:

<http://www.q-see.com>

Fax:

714-998-3509

Customer Service:

Phone: 877-998-3440 x 538

Email: cs@dpsi-usa.com

Tech Support:

Phone: 877-998-3440 x 539

Email: ts@dpsi-usa.com