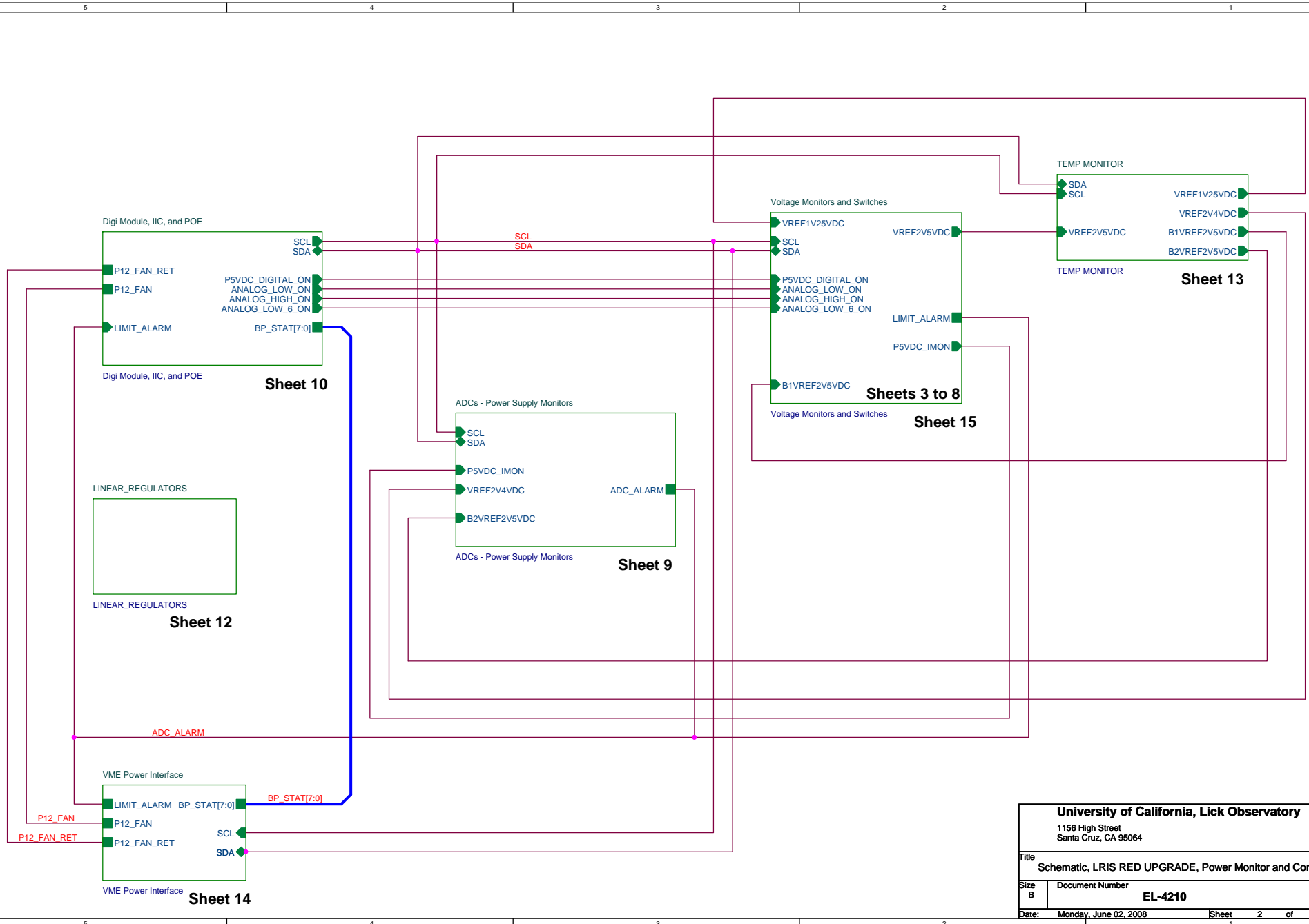


Revision	Date	Who	ECN #	Description of Change(s)
0.1	05-Dec-2007	MP/RB	-	Initial version.
0.2	12-FEB-2008	MP/RB	-	General cleanup. Add JTAG header JP9 and correct Digi Module, J3, JTAG pinout.
0.3	08-Mar-2008	MP/RB	-	Add manual power-on circuit to sheet 10. Change opto-switches to operate from 3.3VDC instead of 5.0VDC. Add manual turn-on circuit for maintenance mode. Add POE bridge/filter circuit.
0.4	07-Apr-2008	MP/RB	-	Add linear regulators for +/-6VDC, +/-15VDC, and +3.3 VDC. Add optically isolated I2C interface.
0.5	22-Apr-2008	MP/RB	-	Remove linear regulators for +/-6VDC, +/-15VDC.
0.55	23-May-2008	MP/RB	-	Change the package of the AD7298 IC to an LQFP64. Annotate DigiKey info into schematic.
0.60	02-Jun-2008	MP/RB	-	Add global power connections to P16VDC_MON and P30VDC_MON on schematic page 3 for proper netlist generation. Add net names to 5 nets on each of the P6, M6,P16,M16, and M30 sheets to produce a less confusing netlist.

University of California, Lick Observatory		
1156 High Street Santa Cruz, CA 95064		
Title		
Schematic, LRIS RED UPGRADE, Power Monitor and Control		
Size	Document Number	Rev
B	EL-4210	0.60
Date: Monday, June 02, 2008		
Sheet 1 of 15		

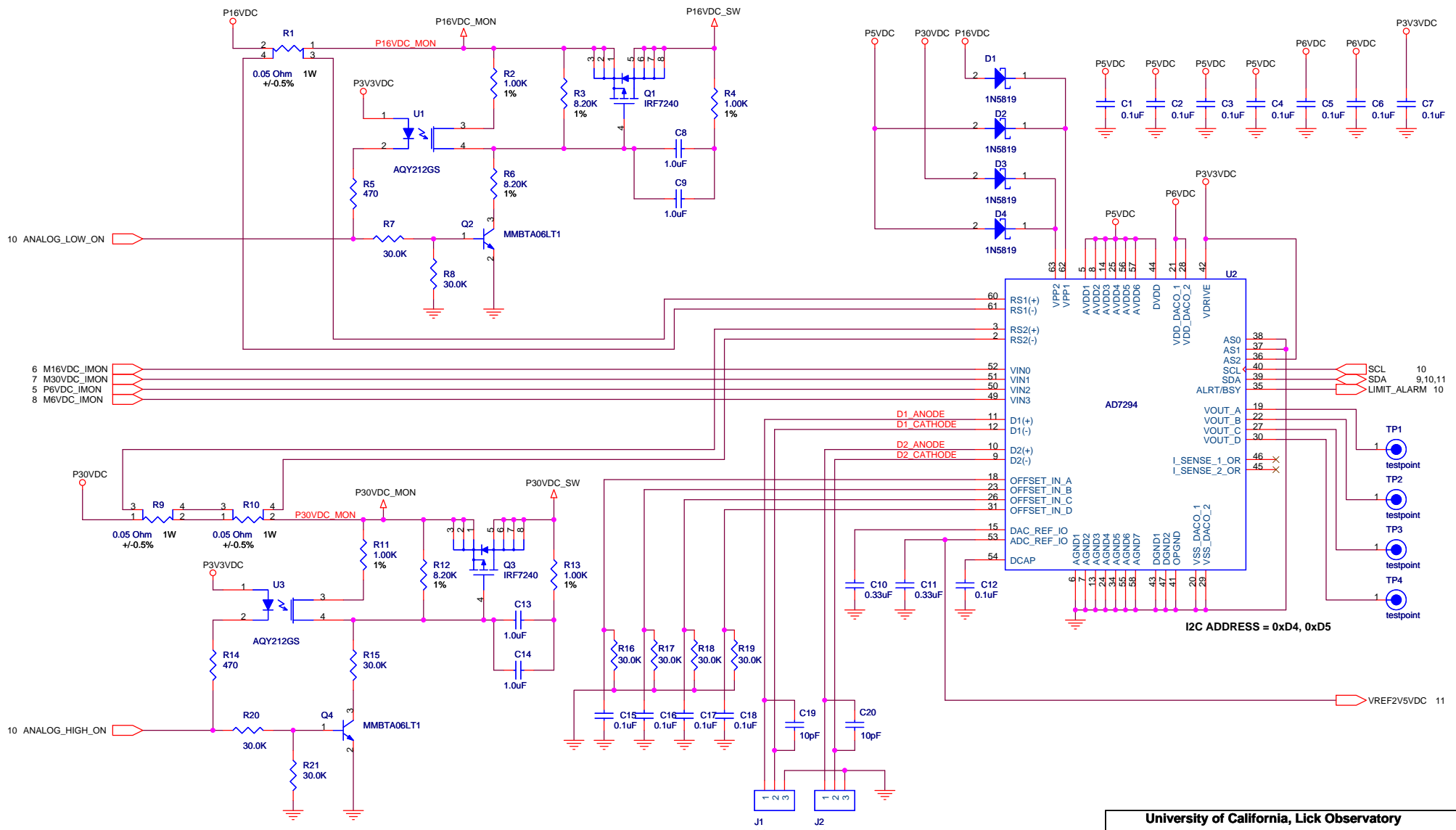


University of California, Lick Observatory
 1156 High Street
 Santa Cruz, CA 95064

Title: **Schematic, LRIS RED UPGRADE, Power Monitor and Control**

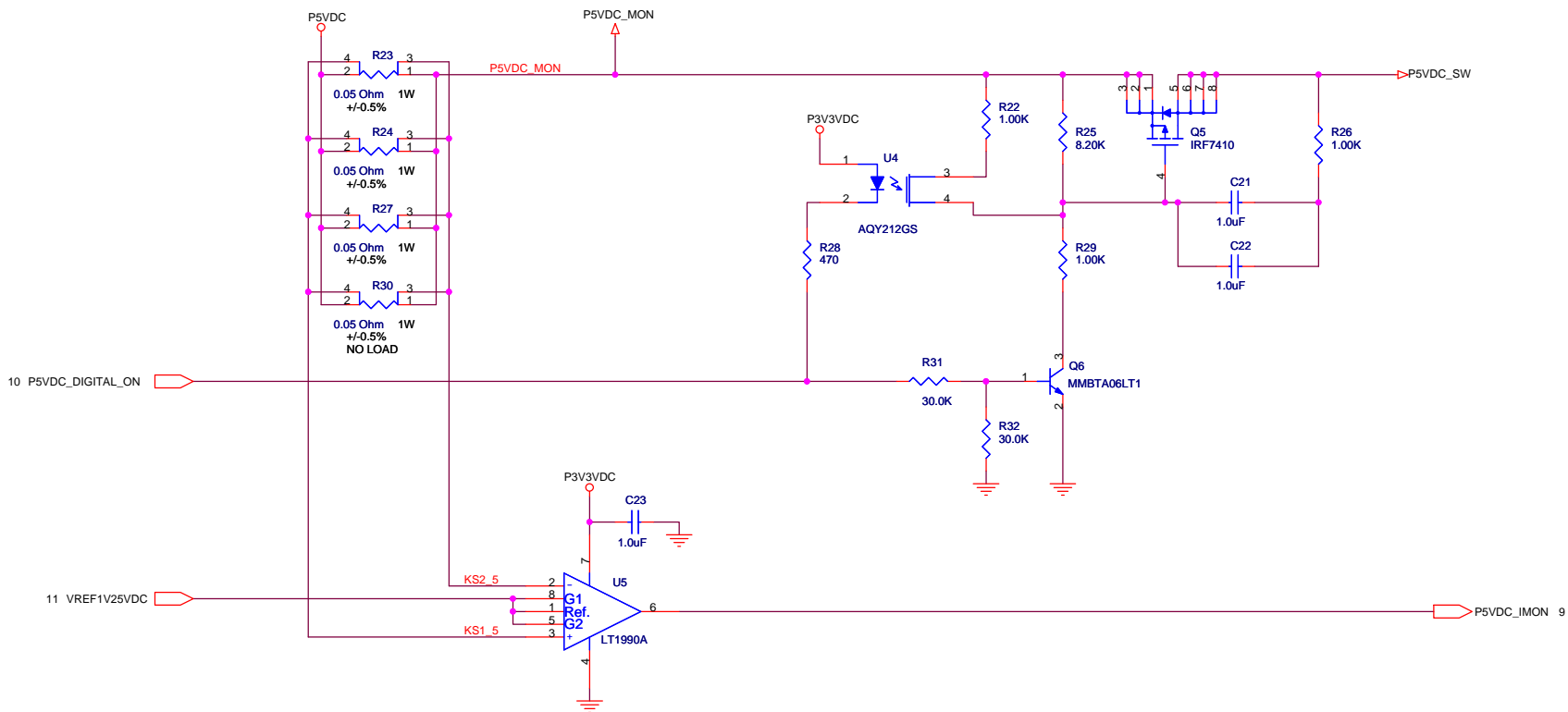
Size B	Document Number EL-4210	Rev 0.60
-----------	-----------------------------------	-------------

Date: **Monday, June 02, 2008** Sheet **2** of **15**

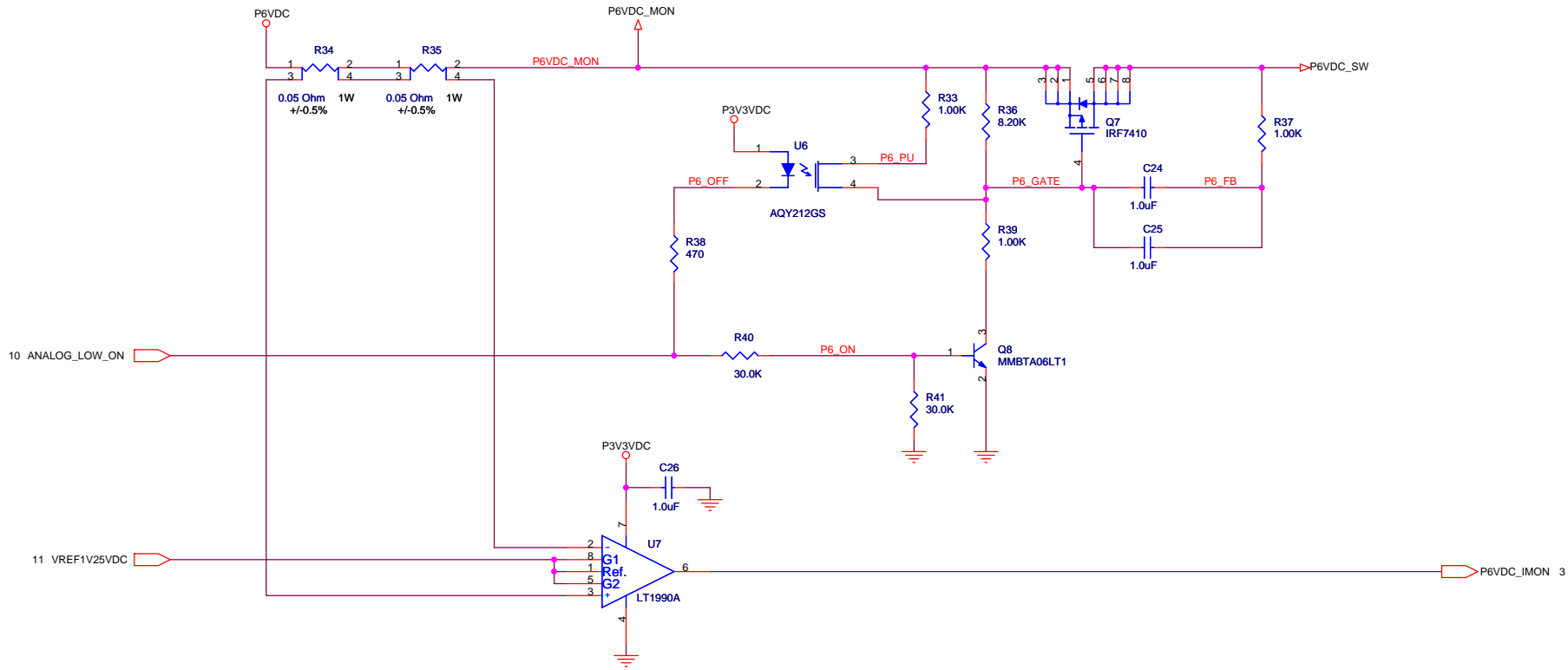


External Temperature Sensors
Short the C-B junction.

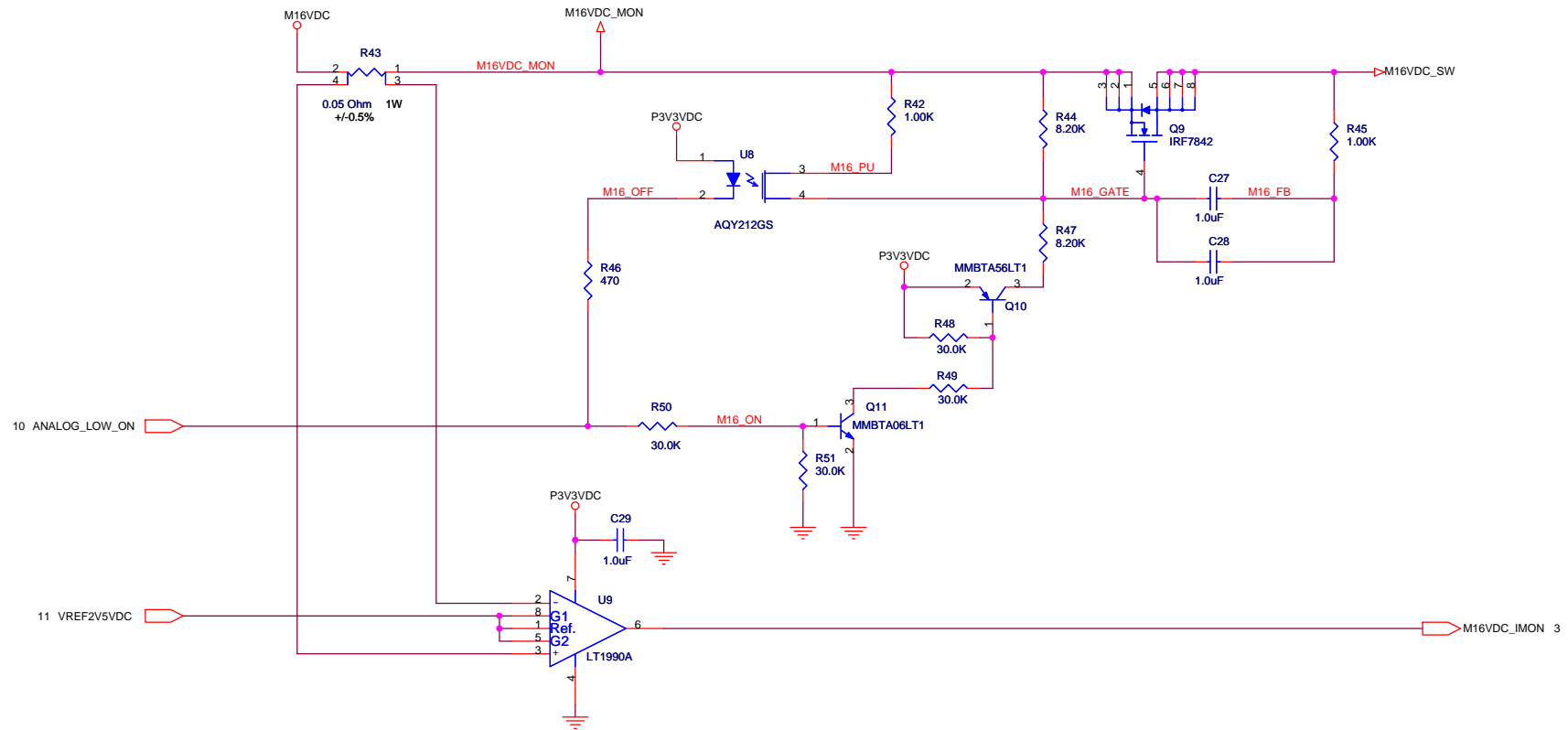
University of California, Lick Observatory		
1156 High Street Santa Cruz, CA 95064		
Title Schematic, LRIS RED UPGRADE, Power Monitor and Control		
Size B	Document Number EL-4210	Rev 0.60
Date: Monday, June 02, 2008	Sheet 3	of 15



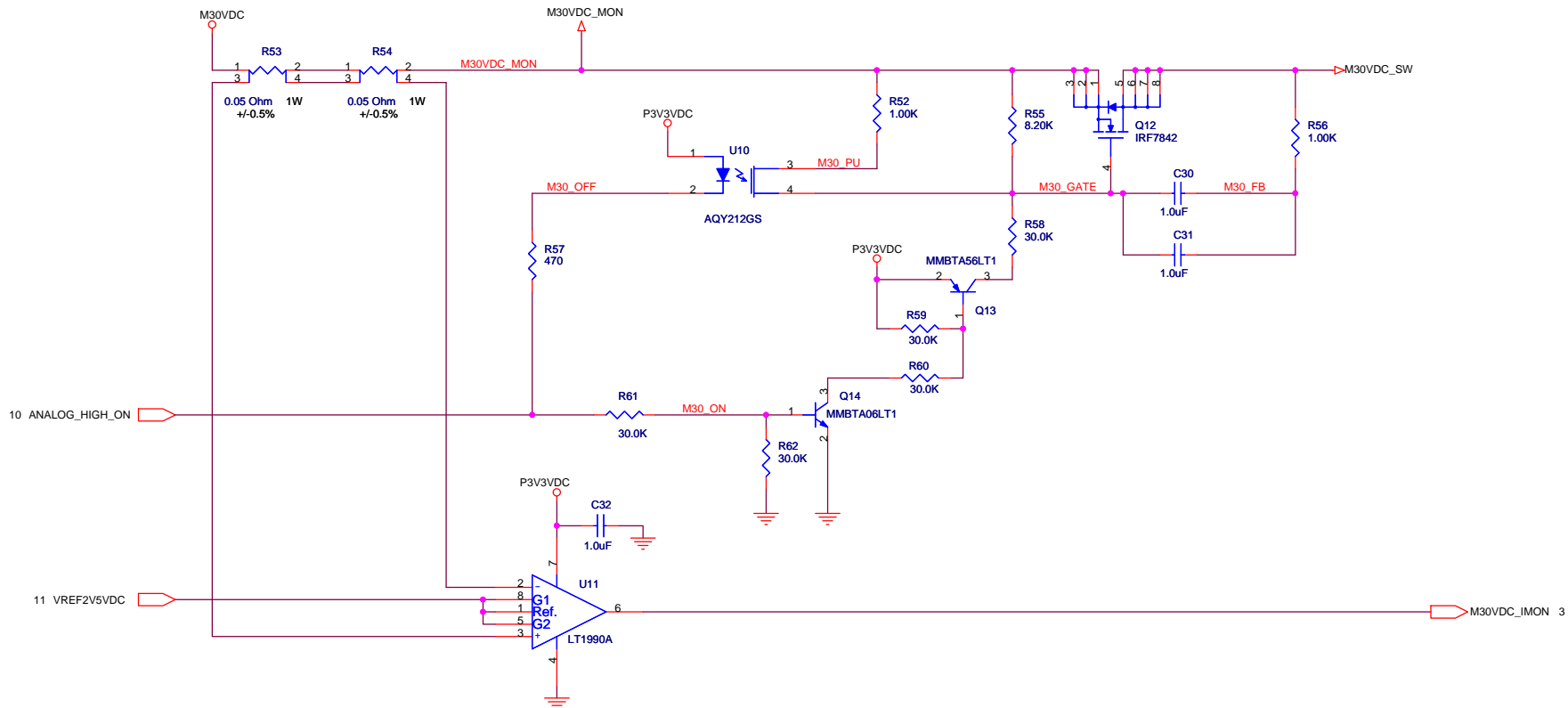
University of California, Lick Observatory 1156 High Street Santa Cruz, CA 95064		
Title Schematic, LRIS RED UPGRADE, Power Monitor and Control		
Size B	Document Number EL-4210	Rev 0.60
Date: Monday, June 02, 2008 Sheet 4 of 15		

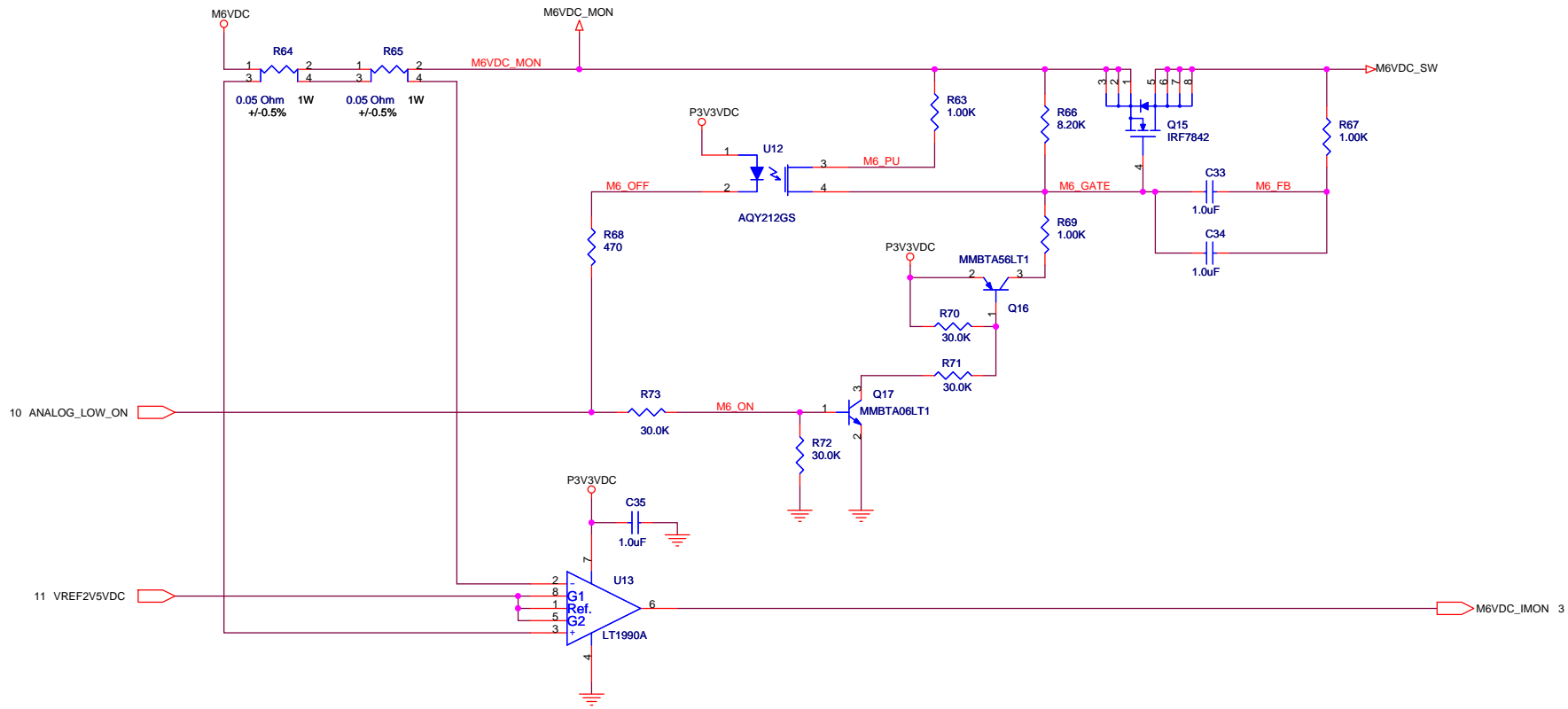


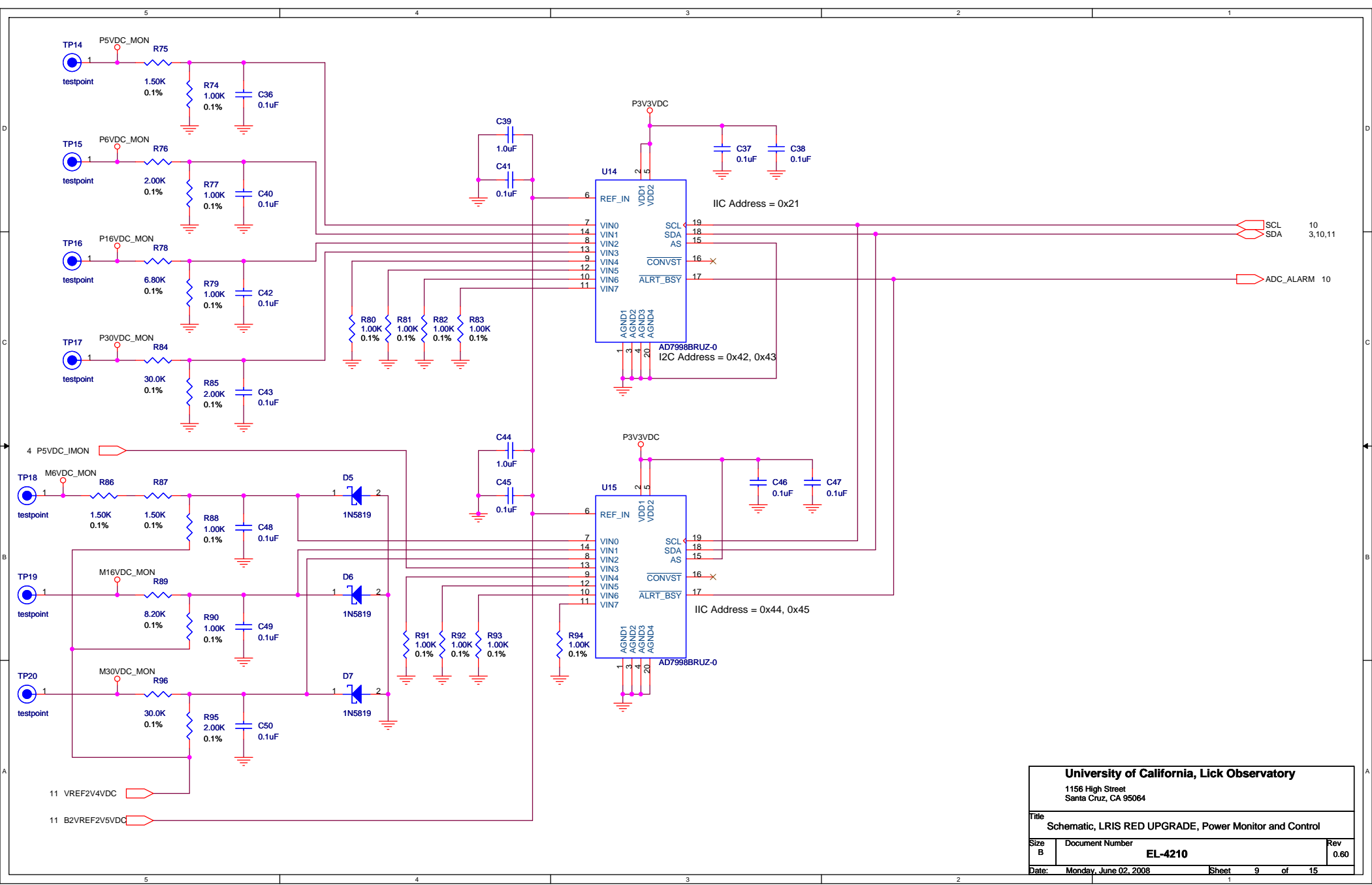
University of California, Lick Observatory		
1156 High Street Santa Cruz, CA 95064		
Title Schematic, LRIS RED UPGRADE, Power Monitor and Control		
Size B	Document Number EL-4210	Rev 0.60
Date: Monday, June 02, 2008 Sheet 5 of 15		

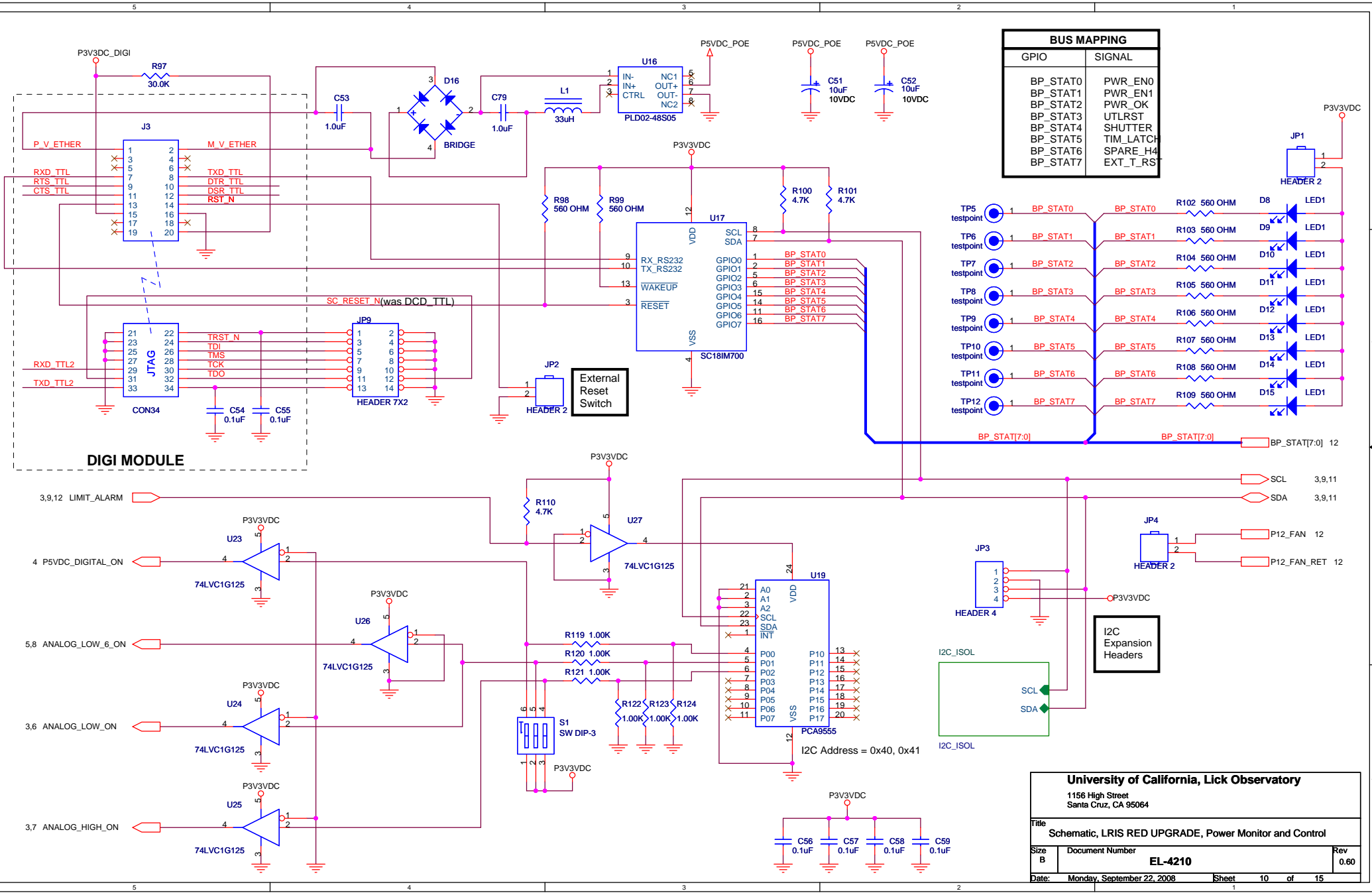


University of California, Lick Observatory 1156 High Street Santa Cruz, CA 95064		
Title Schematic, LRIS RED UPGRADE, Power Monitor and Control		
Size B	Document Number EL-4210	Rev 0.6-
Date: Monday, June 02, 2008 Sheet 6 of 15		

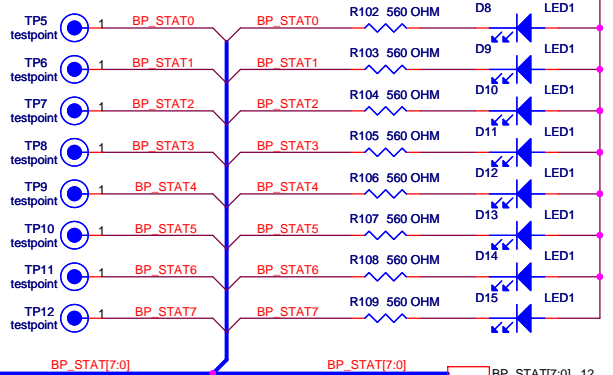








BUS MAPPING		
GPIO		SIGNAL
BP_STAT0		PWR_EN0
BP_STAT1		PWR_EN1
BP_STAT2		PWR_OK
BP_STAT3		UTLRST
BP_STAT4		SHUTTER
BP_STAT5		TIM_LATCH
BP_STAT6		SPARE_H4
BP_STAT7		EXT_T_RST

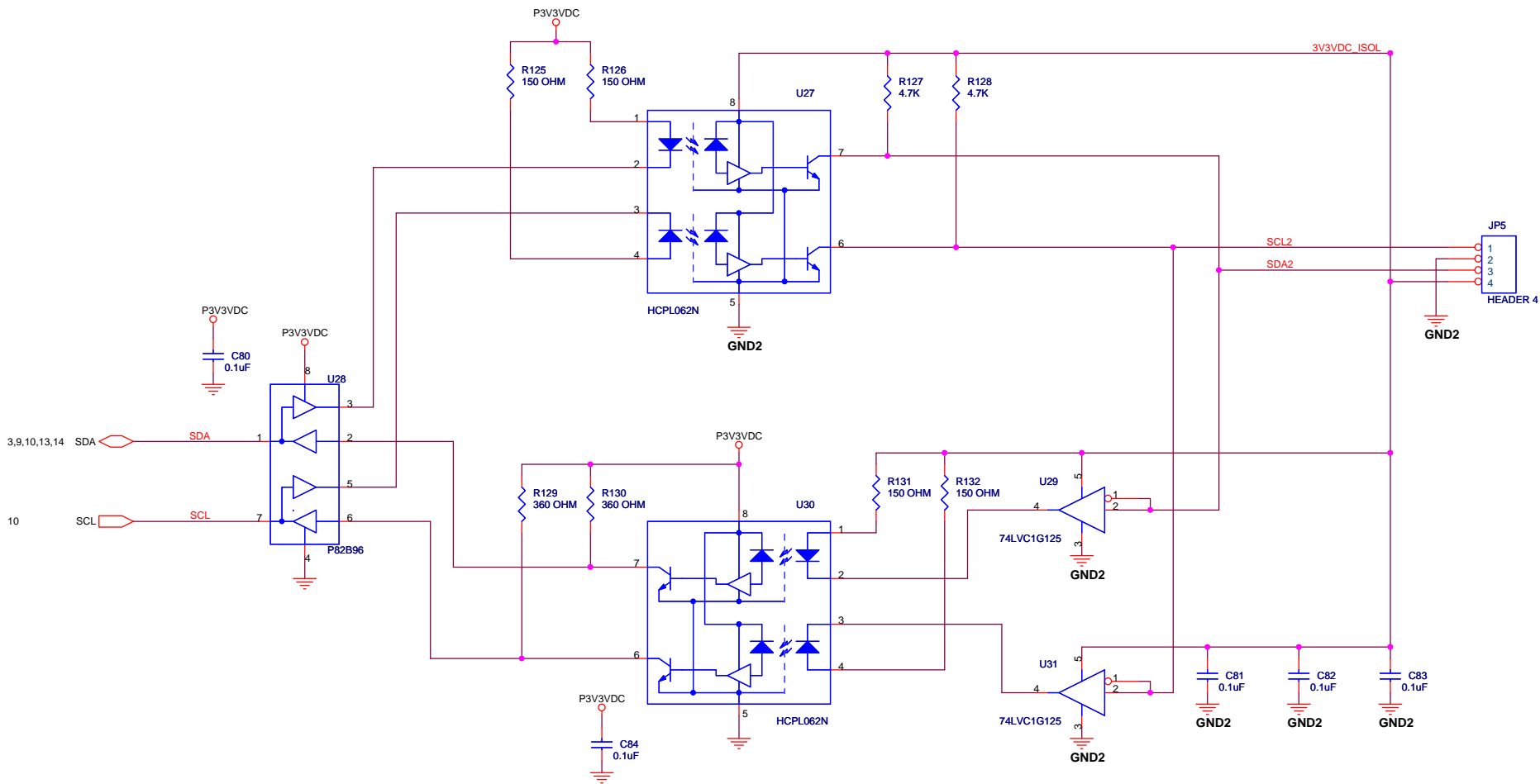


University of California, Lick Observatory
 1156 High Street
 Santa Cruz, CA 95064

Title: **Schematic, LRIS RED UPGRADE, Power Monitor and Control**

Size: B Document Number: **EL-4210** Rev: 0.60

Date: Monday, September 22, 2008 Sheet 10 of 15

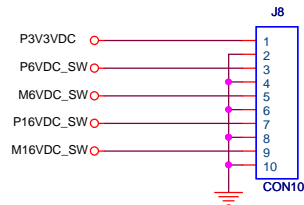
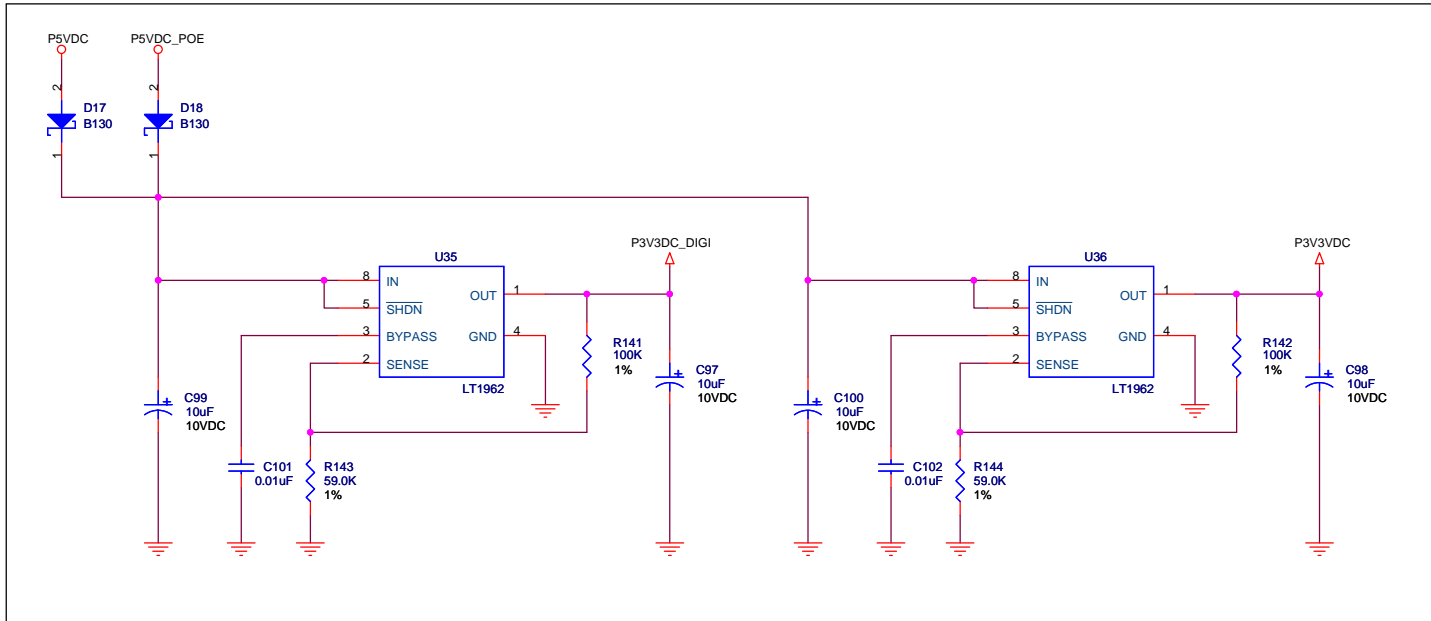


University of California, Lick Observatory
 1156 High Street
 Santa Cruz, CA 95064

Title: Schematic, LRIS RED UPGRADE, Power Monitor and Control

Size B	Document Number	EL-4210	Rev 0.60
--------	-----------------	---------	----------

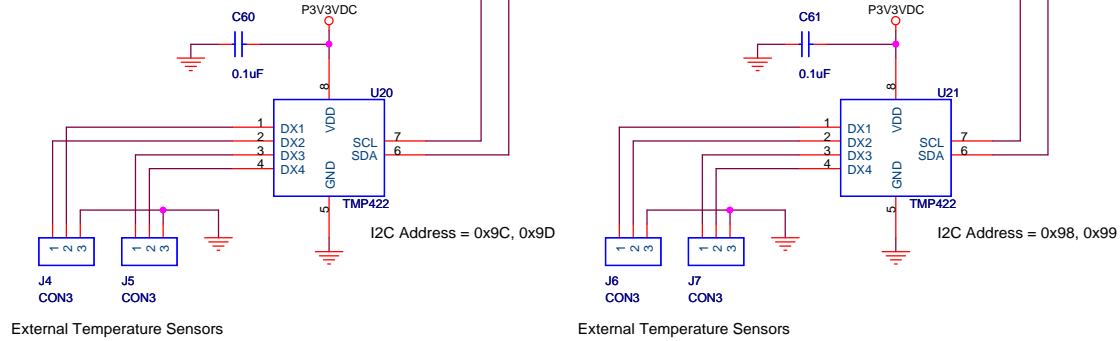
LAYOUT NOTE:
PLACE NEAR P1/Q12.



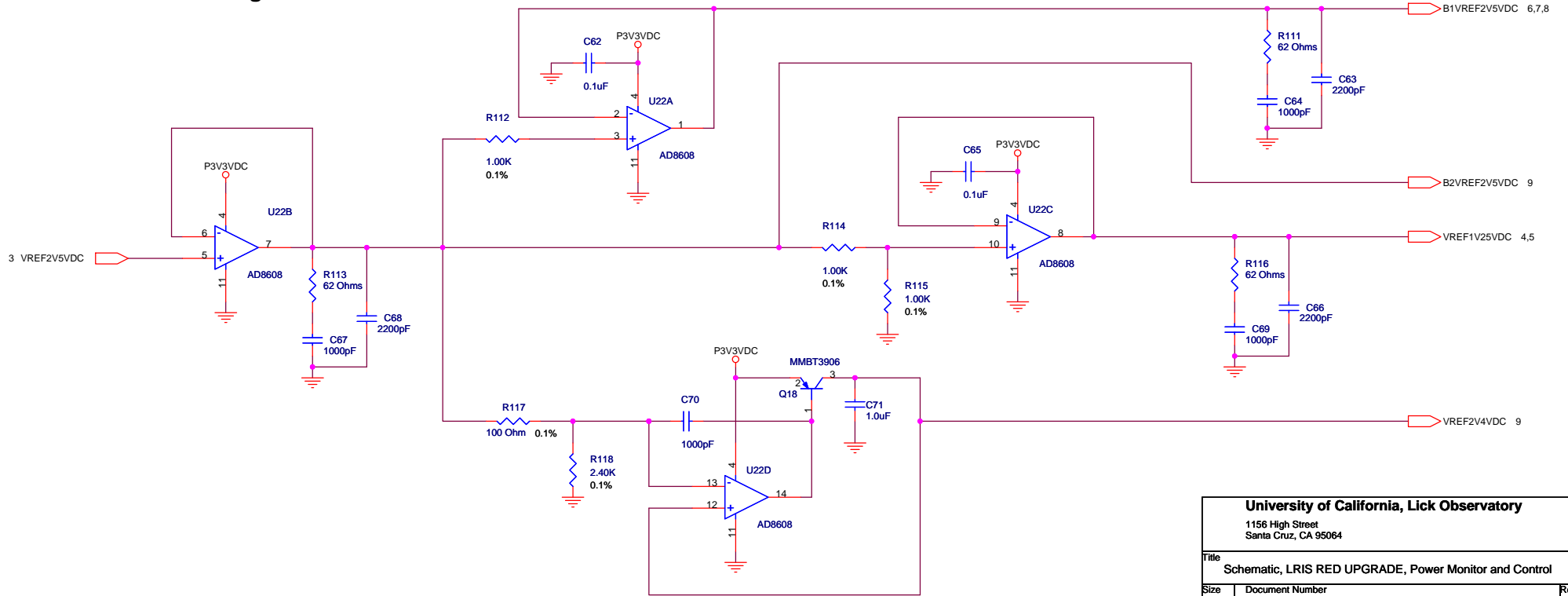
LAYOUT NOTE:
LOCATE ON BOTTOM LAYER OF PCB UNDER J1/J2
WITH PINS NEAR JP3/JP5.

University of California, Lick Observatory		
1156 High Street Santa Cruz, CA 95064		
Title: Schematic, LRIS RED UPGRADE, Power Monitor and Control		
Size: B	Document Number: EL-4210	Rev: 0.60
Date: Monday, June 02, 2008	Sheet: 12	of 15

Temperature Monitors



Voltage Reference Buffers



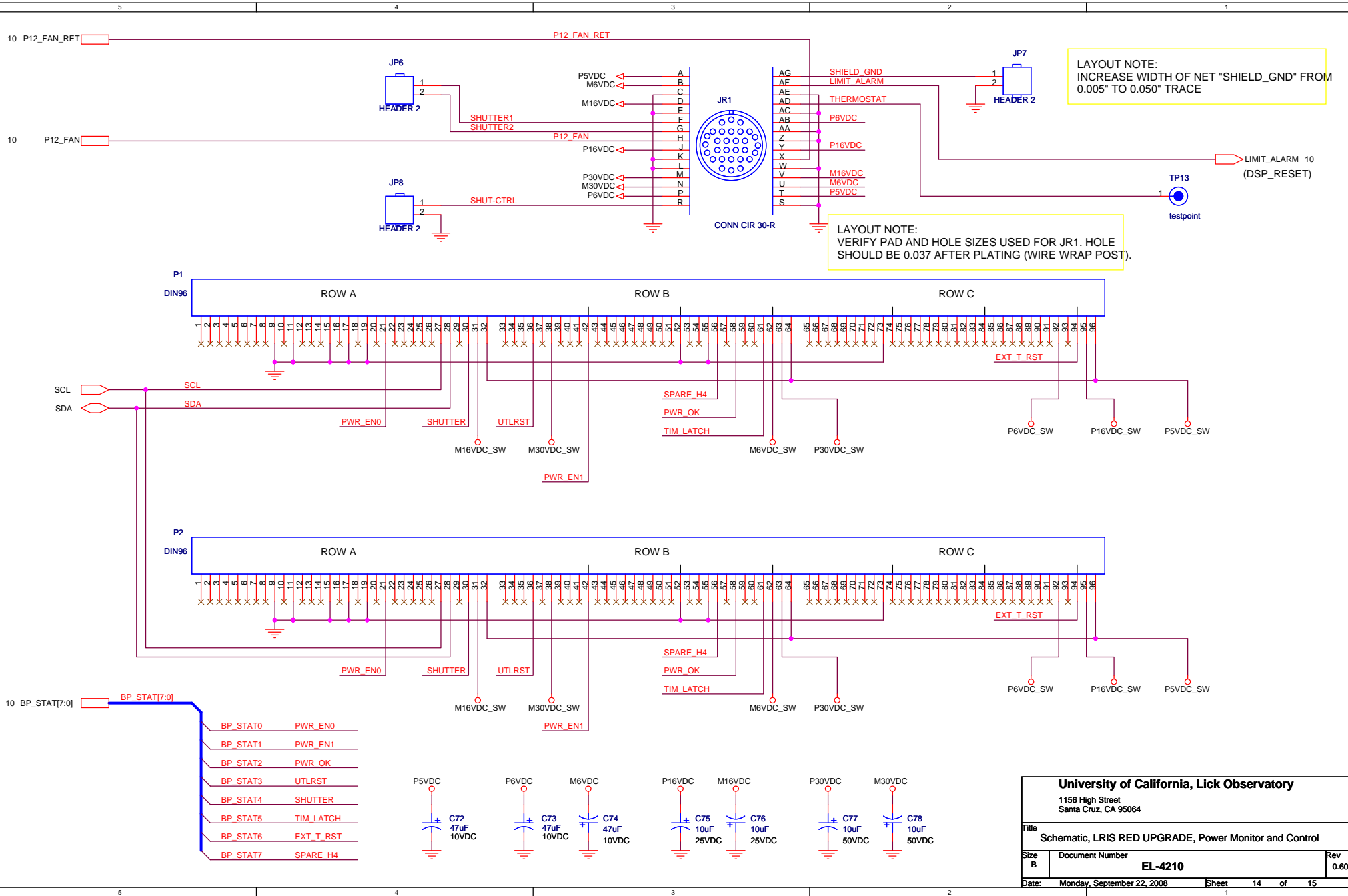
University of California, Lick Observatory

1156 High Street
Santa Cruz, CA 95064

Title
Schematic, LRIS RED UPGRADE, Power Monitor and Control

Size B Document Number **EL-4210** Rev 0.60

Date: Monday, June 02, 2008 Sheet 13 of 15

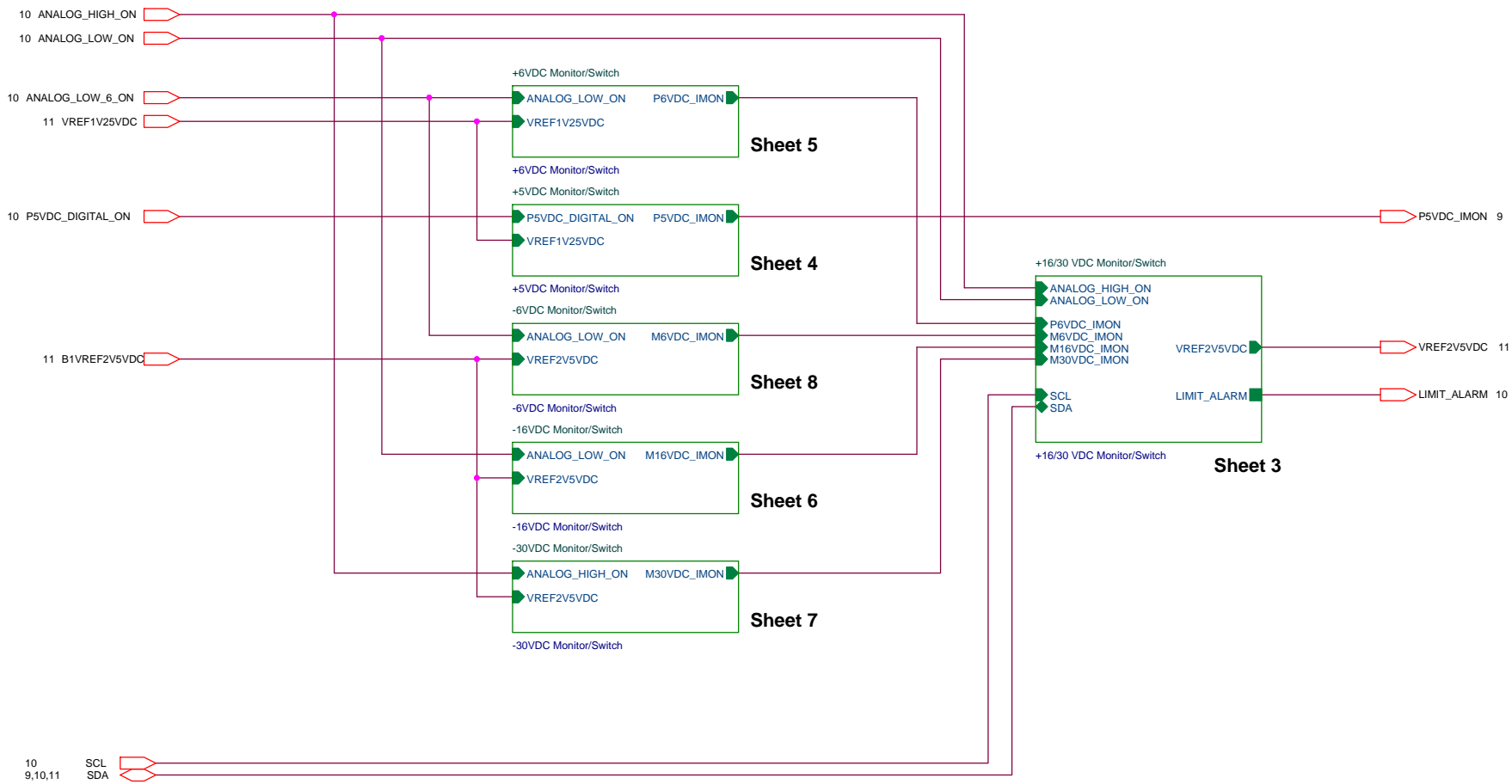


University of California, Lick Observatory
1156 High Street
Santa Cruz, CA 95064

Title: **Schematic, LRIS RED UPGRADE, Power Monitor and Control**

Size: B	Document Number: EL-4210	Rev: 0.60
---------	---------------------------------	-----------

Date: Monday, September 22, 2008 Sheet 14 of 15



University of California, Lick Observatory		
<OrgAddr1> Santa Cruz, CA 95064		
Title Schematic, LRIS RED UPGRADE, Power Monitor and Control		
Size B	Document Number EL-4210	Rev 0.60
Date: Monday, June 02, 2008	Sheet 15	of 15