

EL-3194 JUMPERS

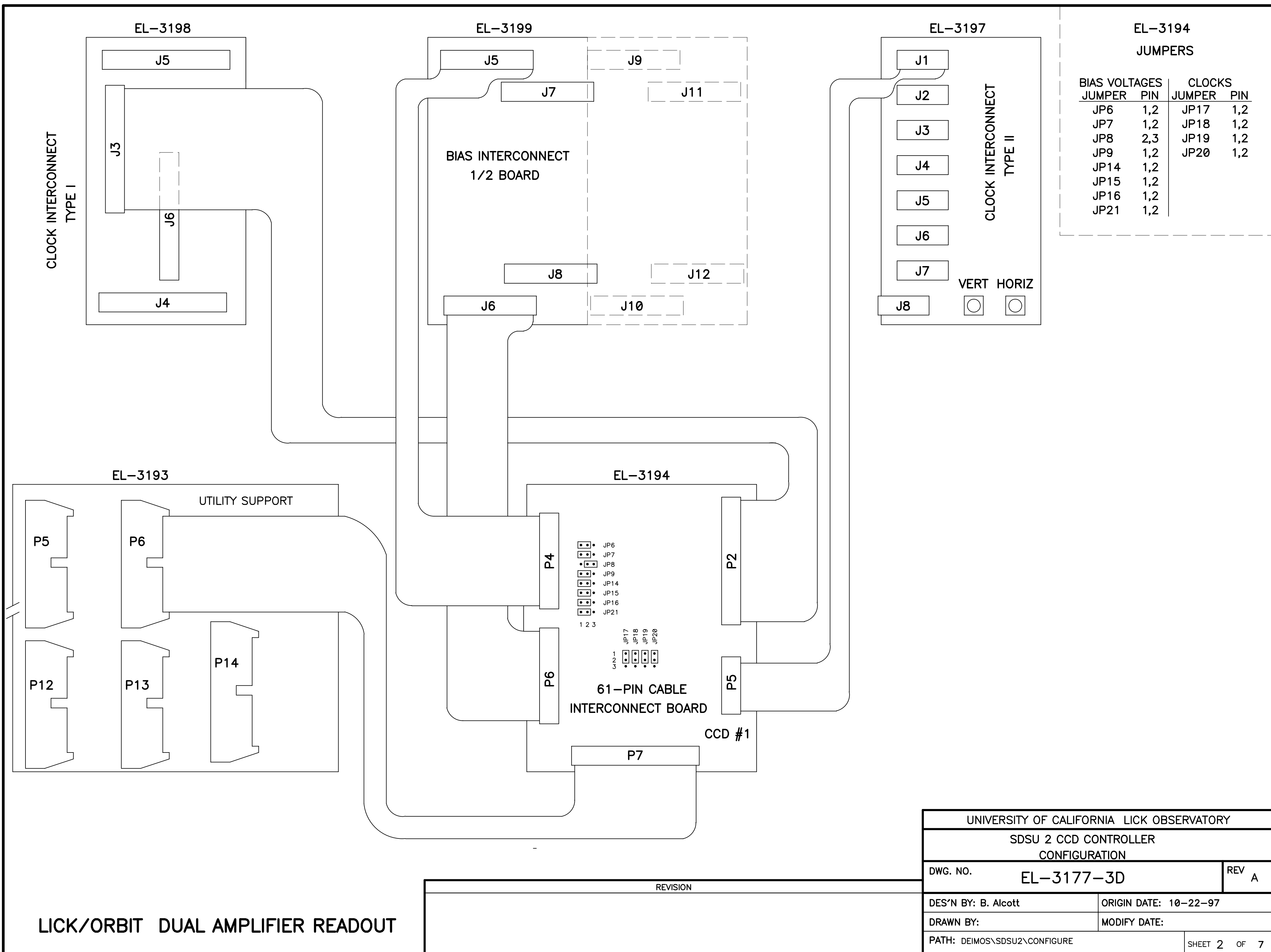
BIAS VOLTAGES		CLOCKS	
JUMPER	PIN	JUMPER	PIN
JP6	1,2	JP17	1,2
JP7	1,2	JP18	1,2
JP8	2,3	JP19	1,2
JP9	1,2	JP20	1,2
JP14	1,2		
JP15	2,3		
JP16	2,3		
JP21	2,3		

PROVIDES TG CLOCK

PROVIDES HORIZONTAL AND VERTICAL SIGNALS TO THE BNC'S

REVISION

UNIVERSITY OF CALIFORNIA LICK OBSERVATORY	
SDSU 2 CCD CONTROLLER CONFIGURATION	
DWG. NO. EL-3177-3D	REV A
DES'N BY: B. Alcott	ORIGIN DATE: 10-22-97
DRAWN BY:	MODIFY DATE:
PATH: DEIMOS\SDSU2\CONFIGURE	SHEET 1 OF 7



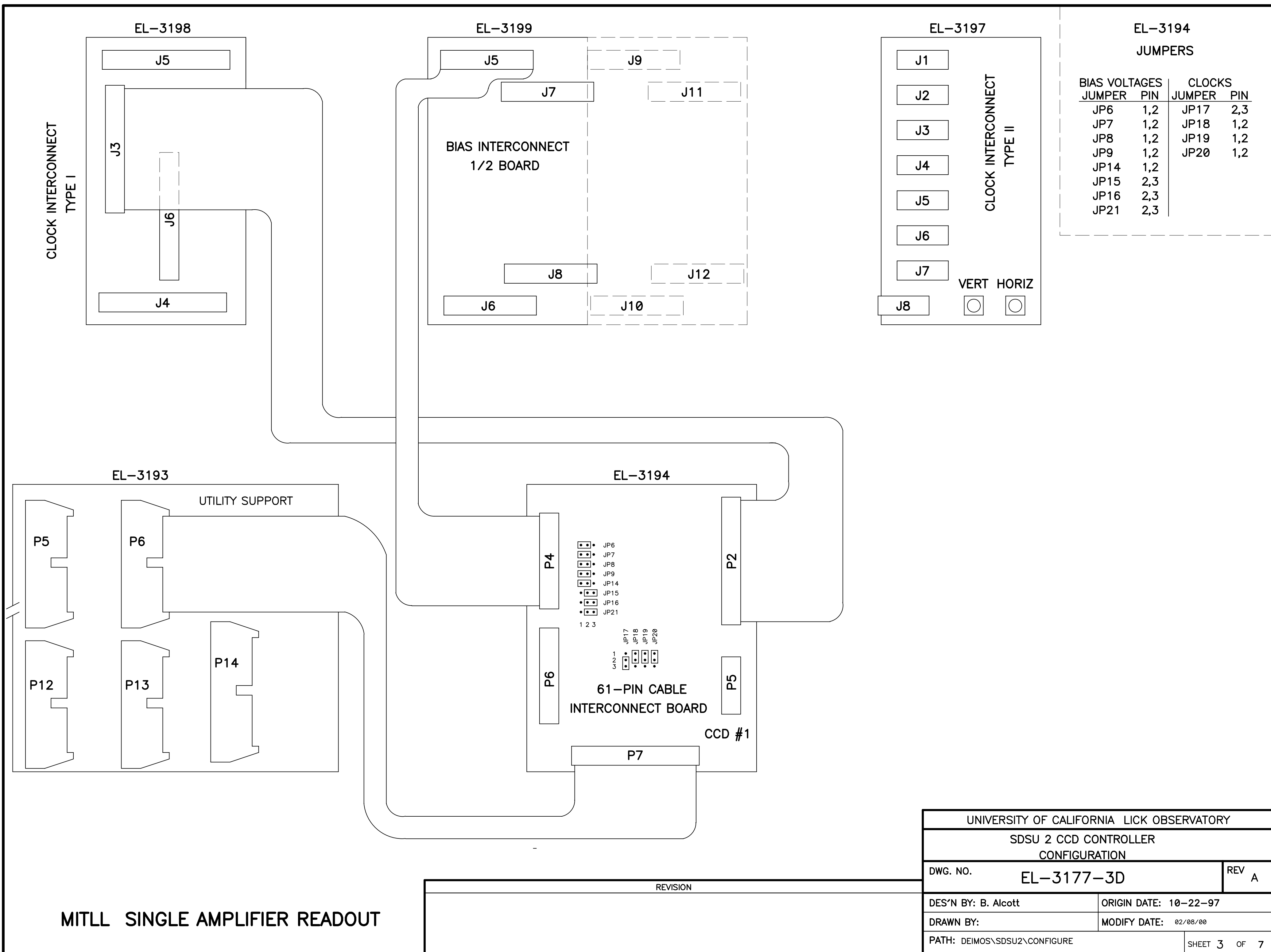
**EL-3194
JUMPERS**

BIAS VOLTAGES		CLOCKS	
JUMPER	PIN	JUMPER	PIN
JP6	1,2	JP17	1,2
JP7	1,2	JP18	1,2
JP8	2,3	JP19	1,2
JP9	1,2	JP20	1,2
JP14	1,2		
JP15	1,2		
JP16	1,2		
JP21	1,2		

UNIVERSITY OF CALIFORNIA LICK OBSERVATORY	
SDSU 2 CCD CONTROLLER CONFIGURATION	
DWG. NO.	EL-3177-3D
	REV A
DES'N BY: B. Alcott	ORIGIN DATE: 10-22-97
DRAWN BY:	MODIFY DATE:
PATH: DEIMOS\SDSU2\CONFIGURE	SHEET 2 OF 7

REVISION

LICK/ORBIT DUAL AMPLIFIER READOUT



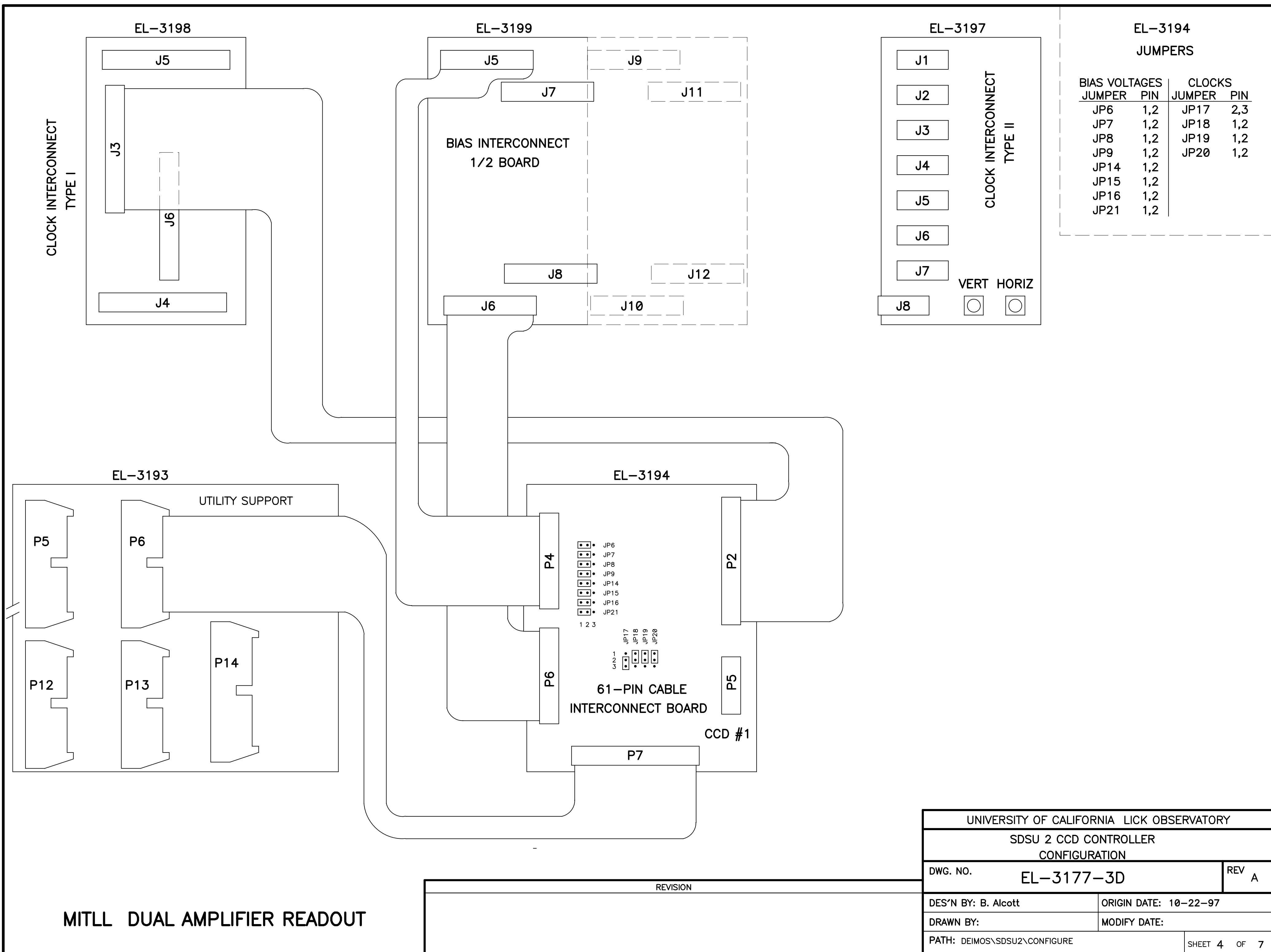
**EL-3194
JUMPERS**

BIAS VOLTAGES		CLOCKS	
JUMPER	PIN	JUMPER	PIN
JP6	1,2	JP17	2,3
JP7	1,2	JP18	1,2
JP8	1,2	JP19	1,2
JP9	1,2	JP20	1,2
JP14	1,2		
JP15	2,3		
JP16	2,3		
JP21	2,3		

UNIVERSITY OF CALIFORNIA LICK OBSERVATORY	
SDSU 2 CCD CONTROLLER CONFIGURATION	
DWG. NO.	EL-3177-3D
REV A	
DES'N BY: B. Alcott	ORIGIN DATE: 10-22-97
DRAWN BY:	MODIFY DATE: 02/08/00
PATH: DEIMOS\SDSU2\CONFIGURE	SHEET 3 OF 7

REVISION

MITLL SINGLE AMPLIFIER READOUT



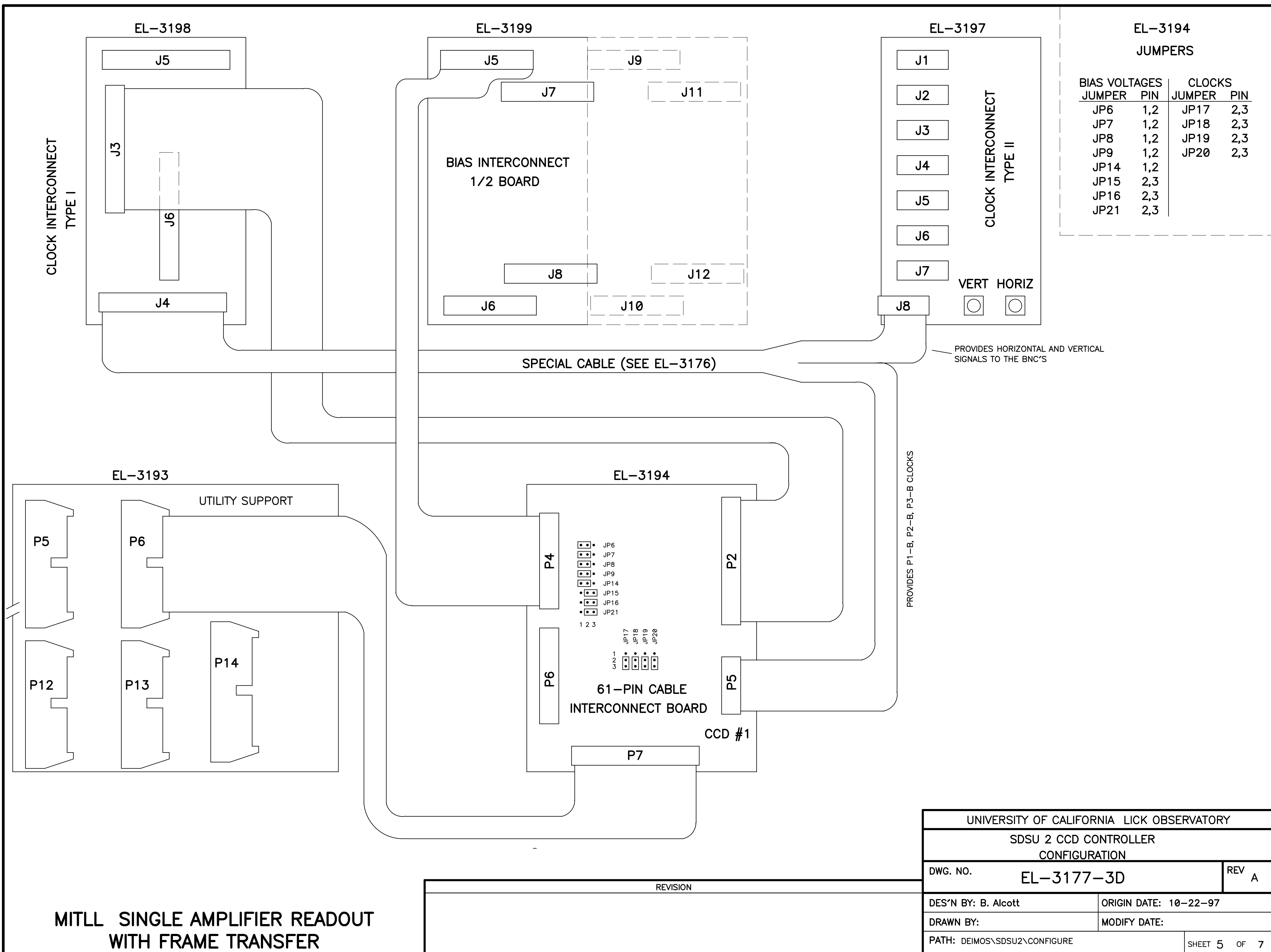
EL-3194 JUMPERS

BIAS VOLTAGES		CLOCKS	
JUMPER	PIN	JUMPER	PIN
JP6	1,2	JP17	2,3
JP7	1,2	JP18	1,2
JP8	1,2	JP19	1,2
JP9	1,2	JP20	1,2
JP14	1,2		
JP15	1,2		
JP16	1,2		
JP21	1,2		

UNIVERSITY OF CALIFORNIA LICK OBSERVATORY	
SDSU 2 CCD CONTROLLER CONFIGURATION	
DWG. NO.	EL-3177-3D
DES'N BY: B. Alcott	ORIGIN DATE: 10-22-97
DRAWN BY:	MODIFY DATE:
PATH: DEIMOS\SDSU2\CONFIGURE	SHEET 4 OF 7

REVISION

MITLL DUAL AMPLIFIER READOUT



EL-3194 JUMPERS

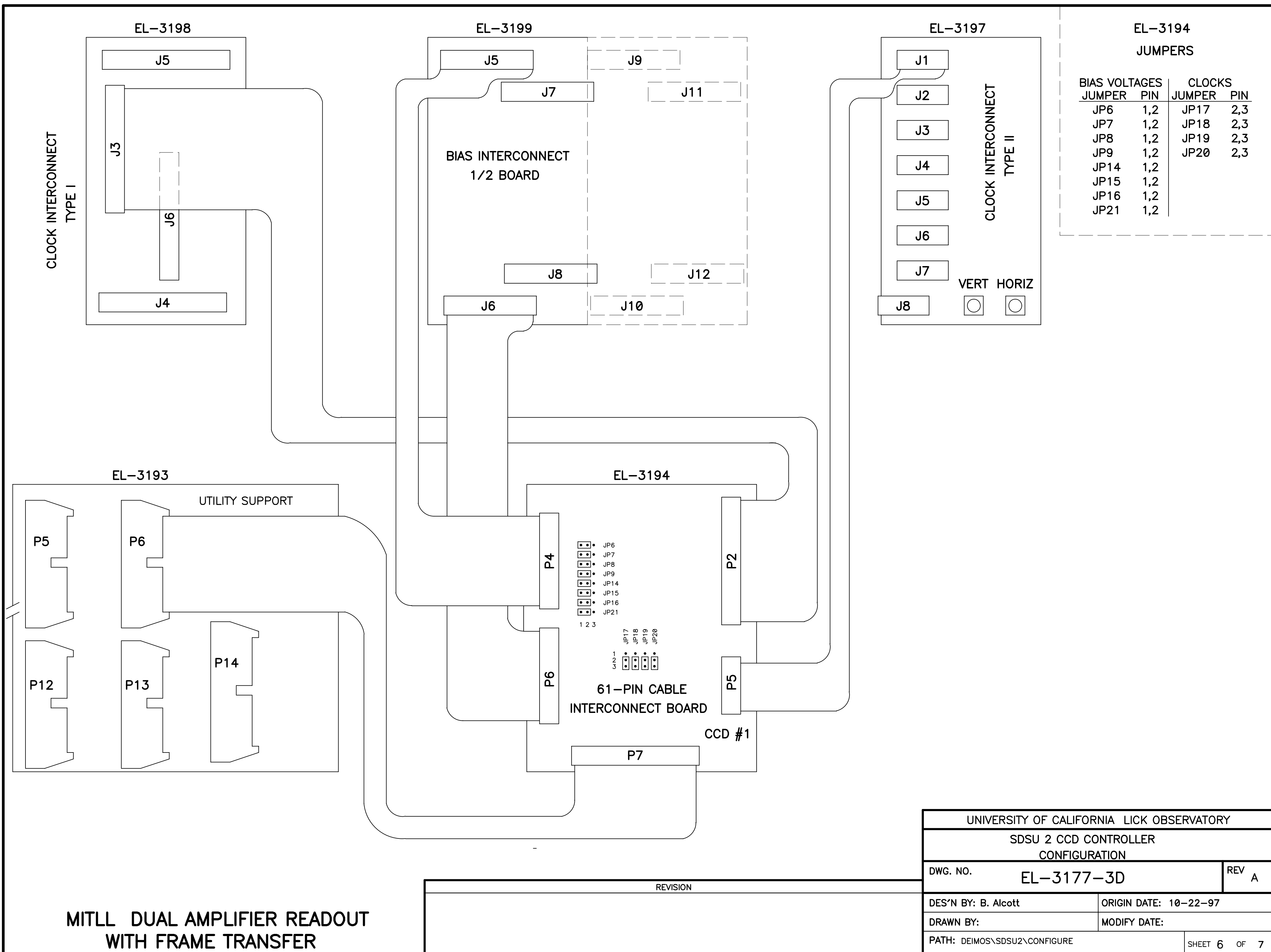
BIAS VOLTAGES		CLOCKS	
JUMPER	PIN	JUMPER	PIN
JP6	1,2	JP17	2,3
JP7	1,2	JP18	2,3
JP8	1,2	JP19	2,3
JP9	1,2	JP20	2,3
JP14	1,2		
JP15	2,3		
JP16	2,3		
JP21	2,3		

MITLL SINGLE AMPLIFIER READOUT WITH FRAME TRANSFER

REVISION

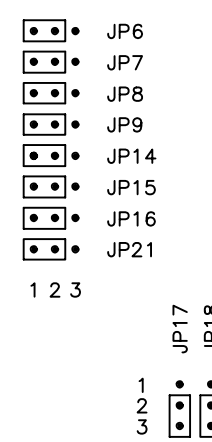
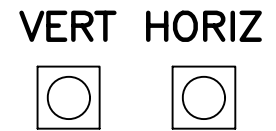
UNIVERSITY OF CALIFORNIA LICK OBSERVATORY	
SDSU 2 CCD CONTROLLER CONFIGURATION	
DWG. NO.	EL-3177-3D
DES'N BY: B. Alcott	ORIGIN DATE: 10-22-97
DRAWN BY:	MODIFY DATE:
PATH: DEIMOS\SDSU2\CONFIGURE	SHEET 5 OF 7

REV A



**EL-3194
JUMPERS**

BIAS VOLTAGES		CLOCKS	
JUMPER	PIN	JUMPER	PIN
JP6	1,2	JP17	2,3
JP7	1,2	JP18	2,3
JP8	1,2	JP19	2,3
JP9	1,2	JP20	2,3
JP14	1,2		
JP15	1,2		
JP16	1,2		
JP21	1,2		



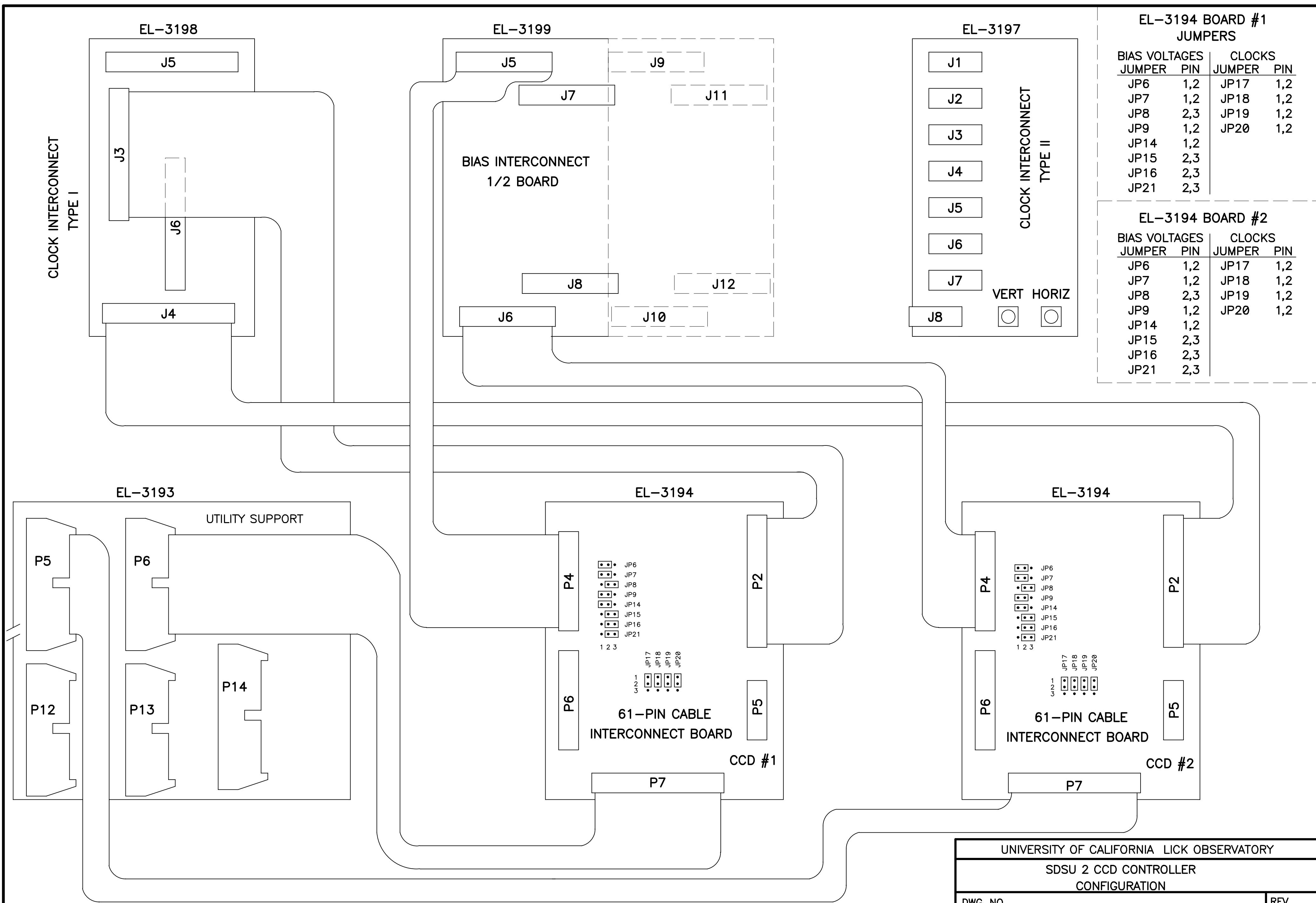
**61-PIN CABLE
INTERCONNECT BOARD**

CCD #1

UNIVERSITY OF CALIFORNIA LICK OBSERVATORY	
SDSU 2 CCD CONTROLLER CONFIGURATION	
DWG. NO.	EL-3177-3D
	REV A
DES'N BY: B. Alcott	ORIGIN DATE: 10-22-97
DRAWN BY:	MODIFY DATE:
PATH: DEIMOS\SDSU2\CONFIGURE	SHEET 6 OF 7

REVISION

**MITLL DUAL AMPLIFIER READOUT
WITH FRAME TRANSFER**



**EL-3194 BOARD #1
JUMPERS**

BIAS VOLTAGES		CLOCKS	
JUMPER	PIN	JUMPER	PIN
JP6	1,2	JP17	1,2
JP7	1,2	JP18	1,2
JP8	2,3	JP19	1,2
JP9	1,2	JP20	1,2
JP14	1,2		
JP15	2,3		
JP16	2,3		
JP21	2,3		

EL-3194 BOARD #2

BIAS VOLTAGES		CLOCKS	
JUMPER	PIN	JUMPER	PIN
JP6	1,2	JP17	1,2
JP7	1,2	JP18	1,2
JP8	2,3	JP19	1,2
JP9	1,2	JP20	1,2
JP14	1,2		
JP15	2,3		
JP16	2,3		
JP21	2,3		

VERT HORIZ

**DEIMOS FLEXURE COMPENSATION
TWO CHIP, SINGLE AMPLIFIER READOUT**

REVISION

UNIVERSITY OF CALIFORNIA LICK OBSERVATORY	
SDSU 2 CCD CONTROLLER CONFIGURATION	
DWG. NO.	EL-3177-3D
DES'N BY: B. Alcott	ORIGIN DATE: 10-22-97
DRAWN BY:	MODIFY DATE:
PATH: DEIMOS\SDSU2\CONFIGURE	SHEET 7 OF 7