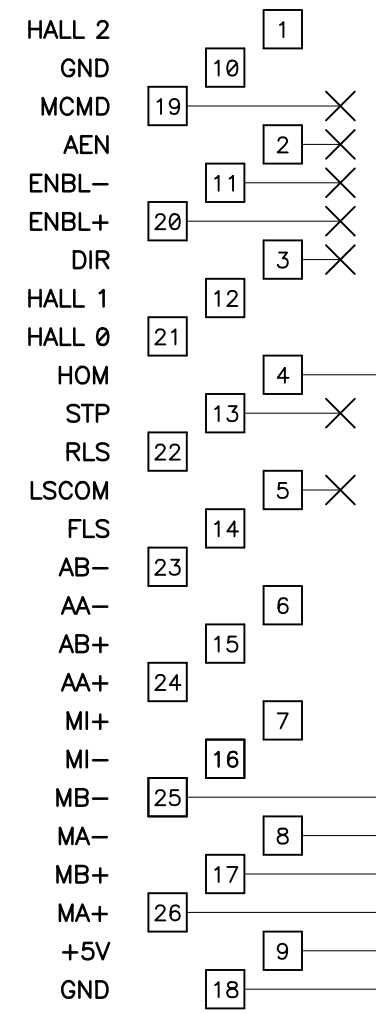
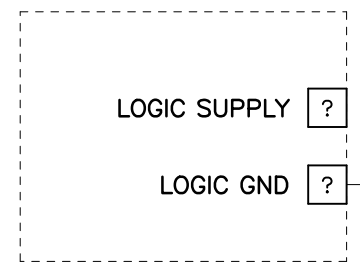
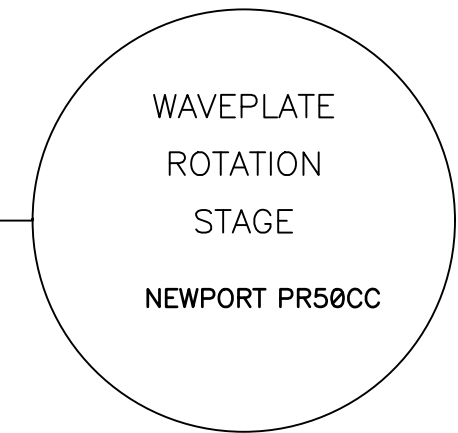
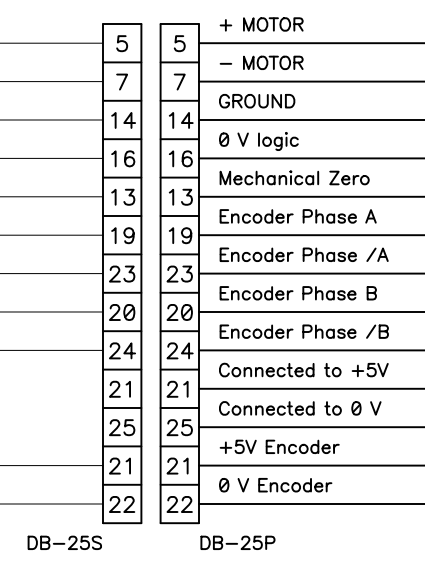


NOTE: Upon receiving unit verify connections on pins 15 & 25 – do we need to supply a voltage and ground here?????



STAGE 1C



UNIVERSITY OF CALIFORNIA OBSERVATORIES		SHANE AO WAVEPLATE STAGES	
DES'N BY: B. Alcott	ORIGIN DATE: 03-09-12	DWG. NO. EL-3818	NUM. 2 OF 3
Last SN	MODIFY DATE: 10-09-12	REV. A	
PRINT TIME: 14:07:18	PRINT DATE: Mon Oct 22, 2012		
PATH: AO Upgrade/		SAO_waveplate.sch	

REVISIONS	<a href="http://loel.ucolick.org/manual/AOup/schematics/AO_waveplate_sh_2.pdf">http://loel.ucolick.org/manual/AOup/schematics/AO_waveplate_sh_2.pdf</a>
10-09-12	ADDED DETAILS TO DRAWING